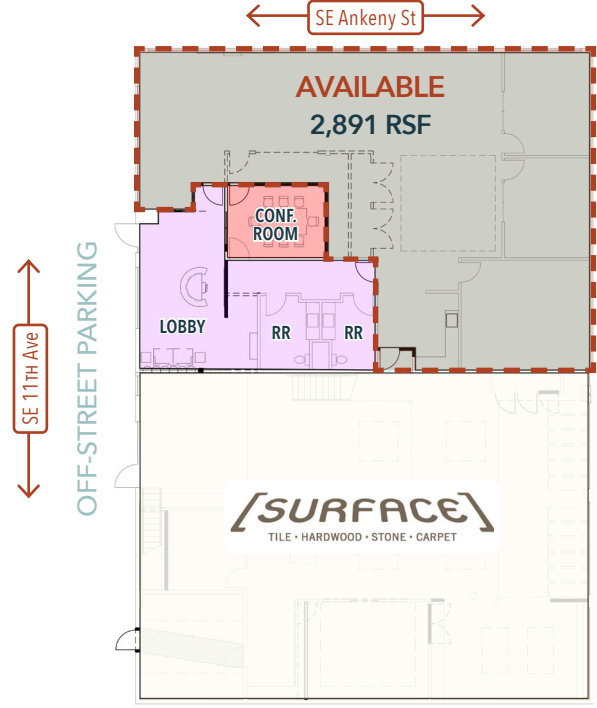




FOR LEASE

SURFACE BUILDING 106 SE 11TH AVE



TENANT SPACE: 2,242 SF
 SHARED CONFERENCE, LOBBY, RESTROOMS: 449 SF
 TOTAL RENTABLE SF = 2,891 RSF

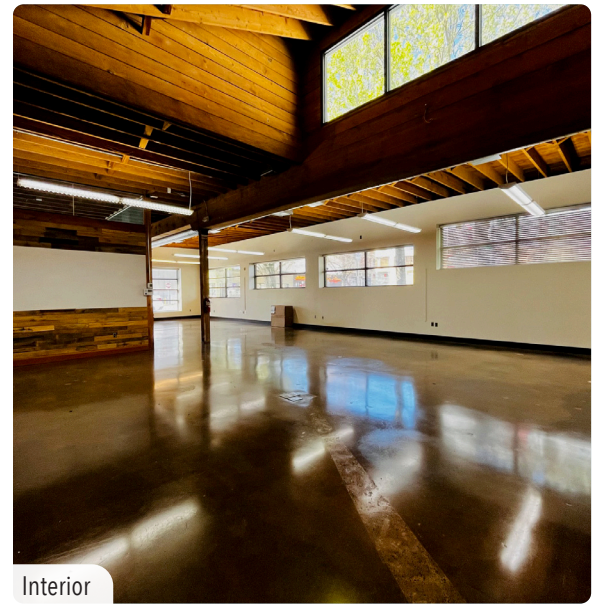
| Address | Available Space | Uses |
|-----------------|-----------------|------------------------|
| 106 SE 11th Ave | 2,891 RSF | Creative Office / Flex |

About the Space - Available Now

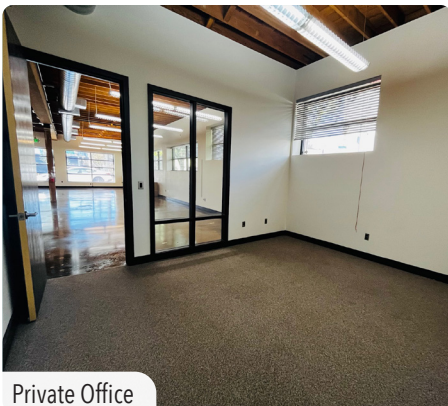
Beautiful creative office or retail showroom space available for lease in this mid-century building. It's close-in SE Portland location is easily accessible from all points around the city. The space features tall exposed wood ceilings, abundant natural light, polished concrete floor, kitchen and three private offices. Surface, a local design company, occupies the south retail space.



Interior



Interior



Private Office



Kitchenette



Storefront