

FOR LEASE

URBAN
WORKS

AVAILABLE
SPACE | 5,000 SF



2410 SE 50TH @ DIVISION

WAREHOUSE / FLEX SPACE FOR LEASE

KIA HARTLEY | DAN BOZICH | 503.228.3080
WWW.URBANWORKSREALESTATE.COM

2410 SE 50TH



ADDRESS | 2410 SE 50TH
USES | RETAIL / FLEX

AVAILABLE | NOW
SPACE | 5,000 SF

NEIGHBORHOOD | RICHMOND

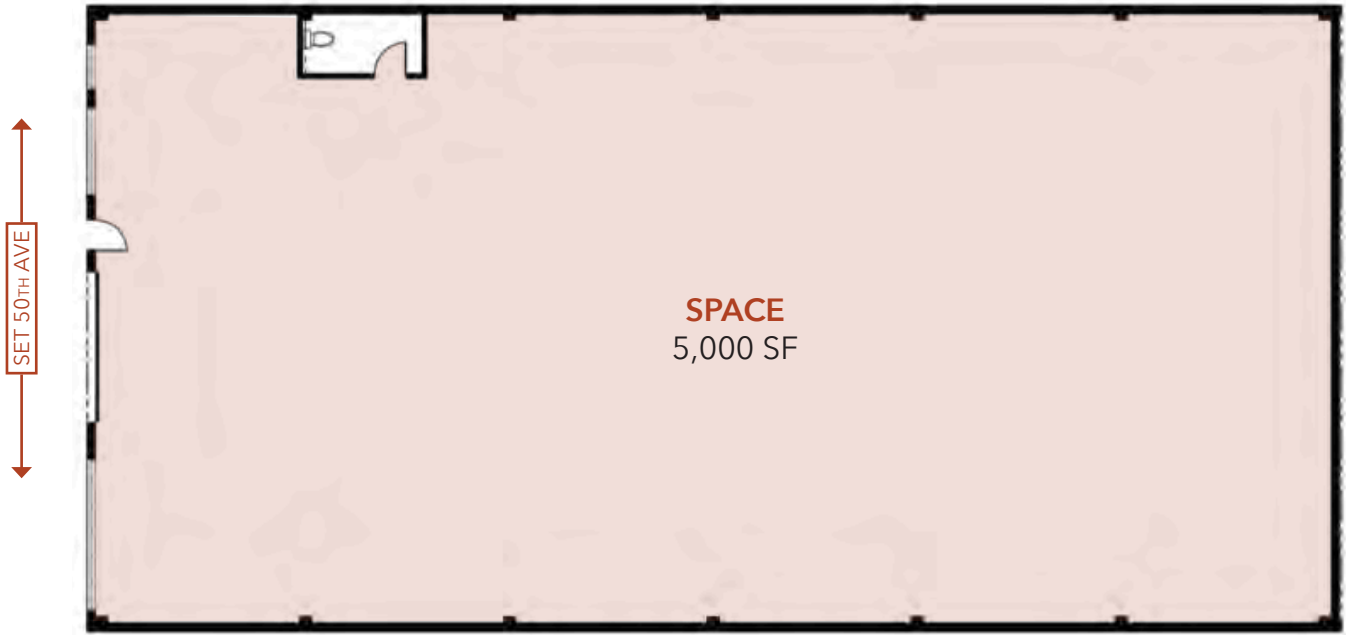
2410 SE 50TH

Exciting opportunity to lease 5,000 square feet in the Richmond Neighborhood. This unique Portland neighborhood boasts fabulous dining on highly traveled Southeast Division Street as well as a livable neighborhood with community gardens, movies in the park, and bike lanes.

Located a half block away from high traffic SE Division Street, this property is surrounded by some of Portland's most popular restaurants and bars. It is also situated among several recently built mid-rise apartment buildings as well as more that are currently under construction. Also new to the neighborhood (opening in late 2018) is a Green Zebra Grocery store.

The space is visible from the corner of SE 50th and Division this mid block property includes a roll up door, high ceilings, and an open flexible floor plan.

FLOOR PLAN



INTERIOR

AREA RETAIL & DEMOS



	.25 MILES	.5 MILES	1 MILE
2018 POPULATION	1,945	7,347	29,139
TOTAL EMPLOYEES	442	1,429	9,059
TOTAL BUSINESSES	81	249	1,416
MEDIAN HH INCOME	\$80,369	\$82,220	\$77,595
MEDIAN AGE	35.7	36.4	36.3
SOME COLLEGE	83.4%	85.3%	84.2%



FOOD CARTS



NORTH BAR



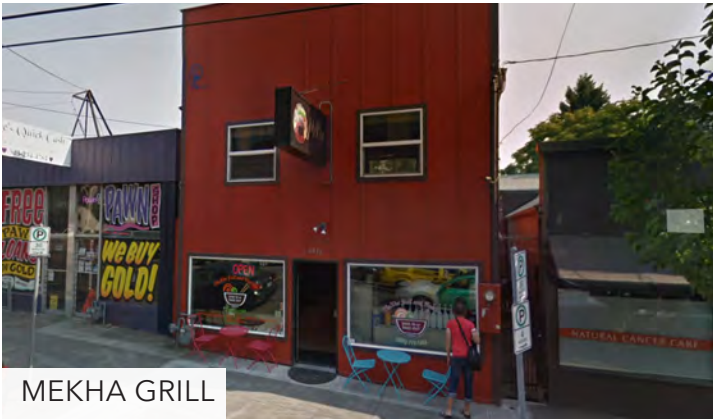
LANDMARK SALOON



PETITE PROVENCE



STUMPTOWN



MEKHA GRILL



GOOD COFFEE

RETAIL MAP

