

# FOR LEASE

URBAN  
WORKS

DELIVERING Q1 2021

Retail 1 | 1,938 SF

Retail 2 | 2,505 SF

Retail 3 | 1,107 SF

Lobby Coffee Kiosk

TALON  
PRIVATE CAPITAL

# THE WEST END

SW 10TH | BLDG | SW WASH



RESTAURANT



RETAIL

COMPLETE BUILDING RENOVATION FEATURING PRIME GROUND FLOOR RETAIL

DAN BOZICH | KIA HARTLEY | 503.228.3080

WWW.URBANWORKSREALESTATE.COM

# 1017 SW WASHINGTON ST



## Address Delivery

1017 SW Washington St Q1 2021

## Uses

Restaurant, Boutique Fitness, Retail

## About The Project

The West End Building is a five-story, 50,000 square foot property featuring prominent retail spaces at the ground floor and creative office space above. Renovations include seismic, exterior upgrades, new windows and roof, and updated mechanical, electrical, plumbing and life-safety systems.

## Located in Portland's West End

The Building is centrally located in Portland's West End and kitty-corner to the new 251 room Ritz Carlton Hotel and apartment/office development. The area is home to a growing number of local and international design shops, fashion boutiques, restaurants, cafés and hotels.



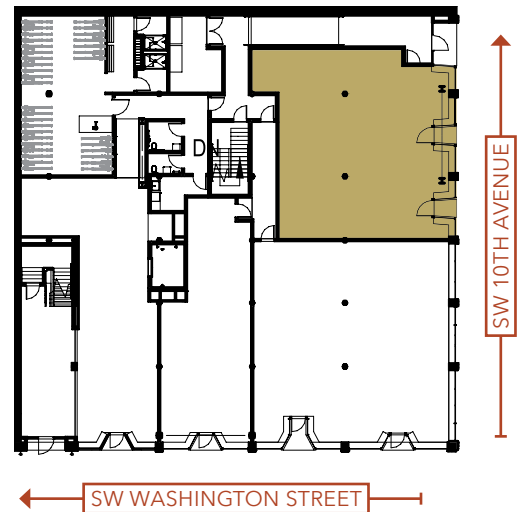
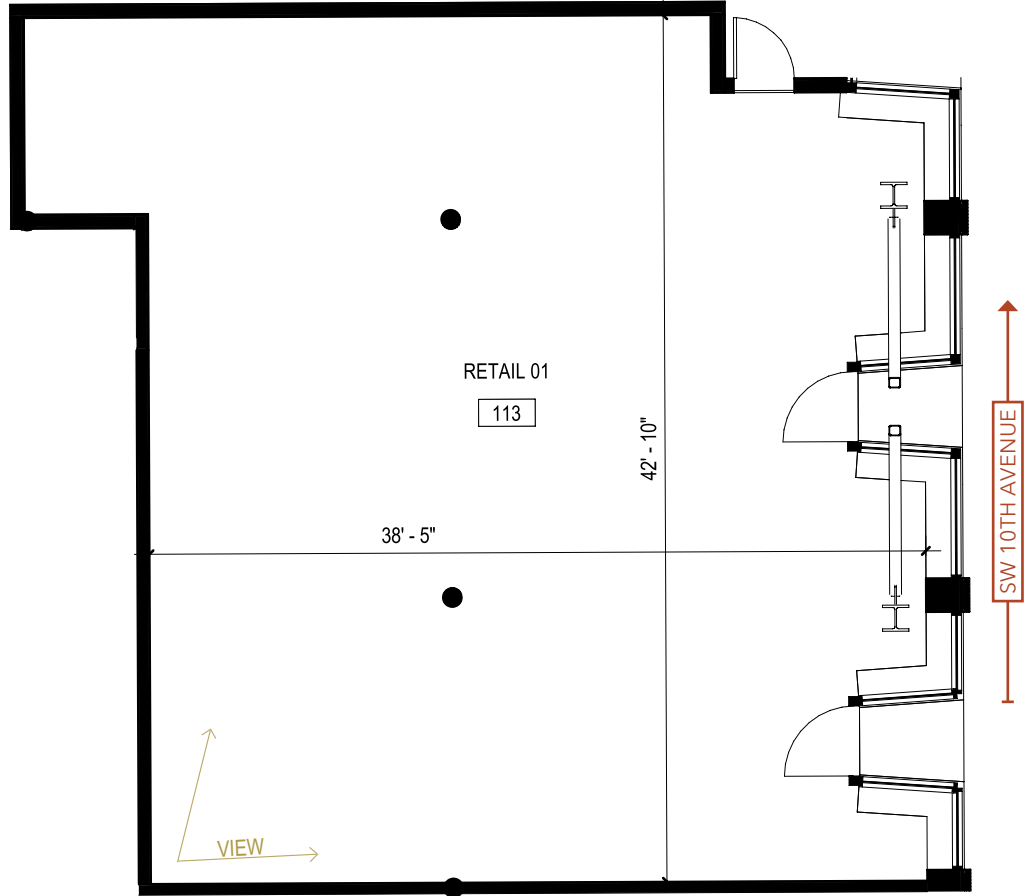
## AVAILABLE SPACES:

Retail 1	Retail 2	Retail 3
1,938 SF	2,505 SF	1,107 SF

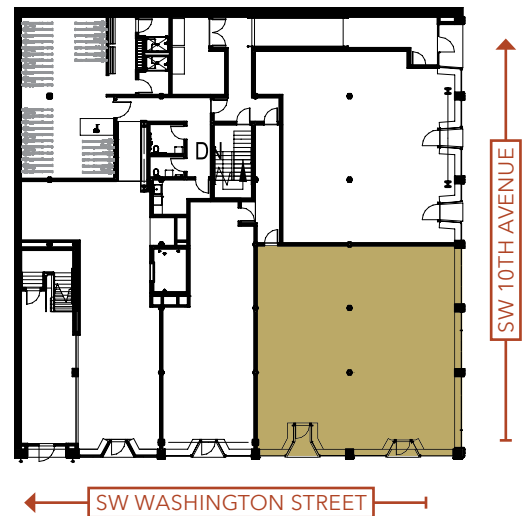
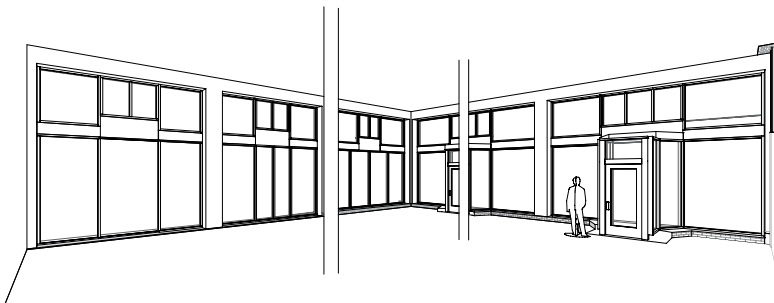
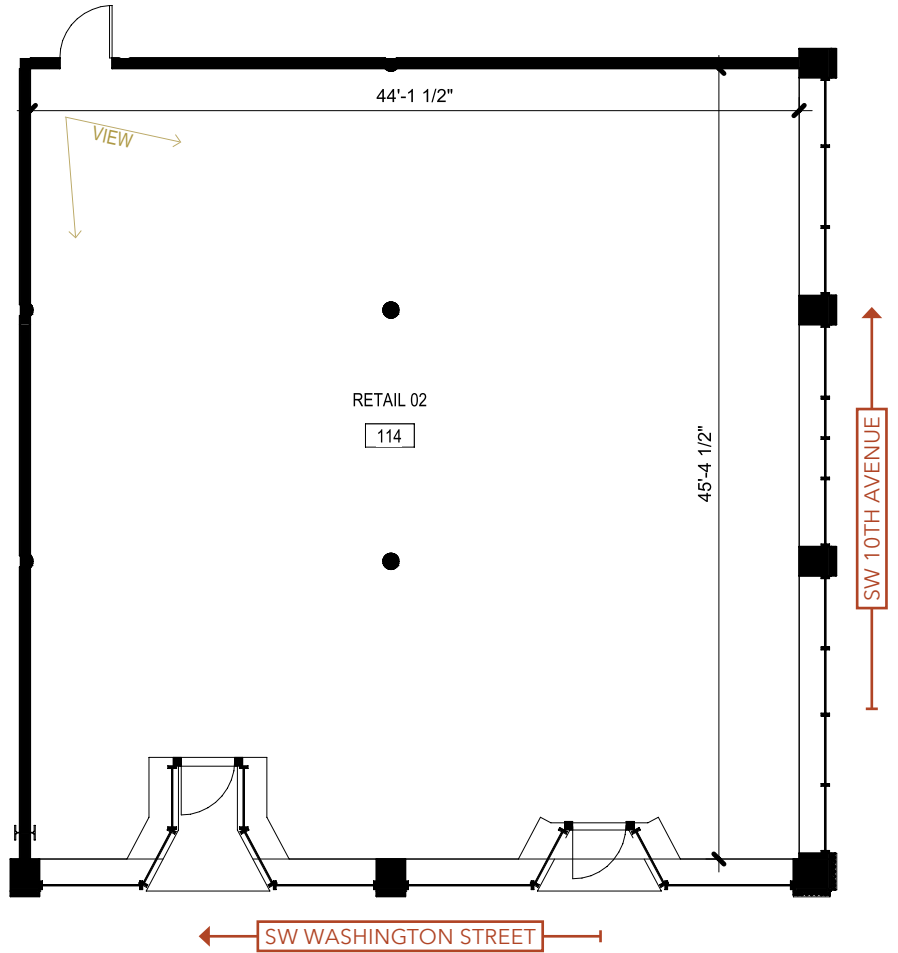
### Lobby Coffee Kiosk Opportunity Available:



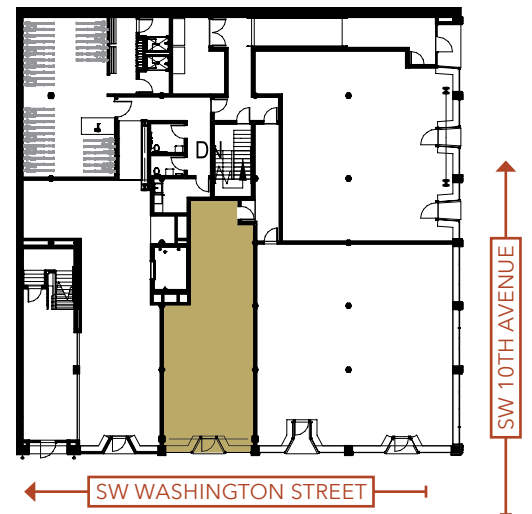
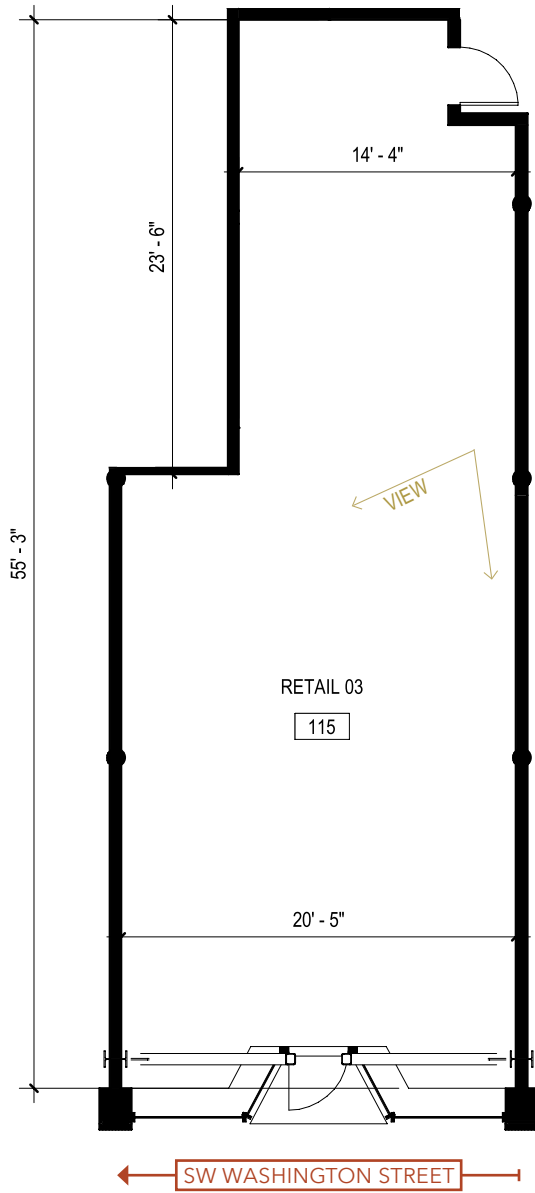
# RETAIL 1: 1,938 SF



# RETAIL 2: 2,505 SF



# RETAIL 3: 1,107 SF



# AREA RETAIL & DEMOS



DEMOGRAPHICS	.25 MILES	.5 MILES	1 MILE
2019 POPULATION	2,990	14,640	46,135
TOTAL EMPLOYEES	22,651	65,704	113,744
TOTAL BUSINESSES	2,018	5,319	9,427
MEDIAN HH INCOME	\$32,825	\$45,012	\$57,253
MEDIAN AGE	40.5	40.0	36.1
SOME COLLEGE	75.7%	82.2%	87.1%



GOOD COFFEE



JAKE'S GRILL



JACKKNIFE



ABIGAIL HALL



TASTY 'N ALDER

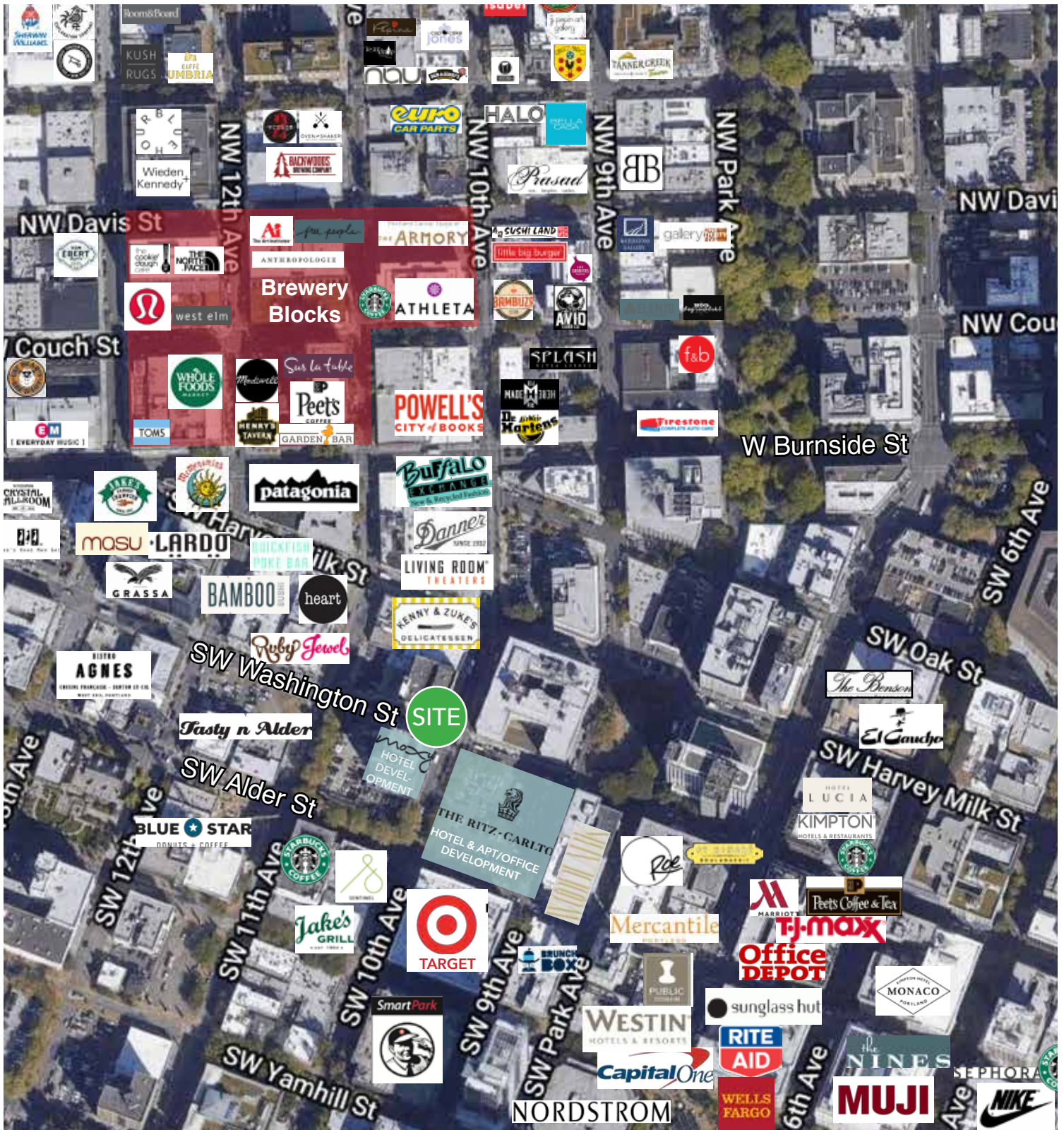


MULTNOMAH WHISKEY LIBRARY



CHERYL'S ON 12TH

# RETAILER MAP



# AREA MAP

