

# FOR LEASE

URBAN  
WORKS

## DOWNTOWN

SPACE | 4,246 SF

PRIME RETAIL SPACE ADJACENT TO THE  
NEW RITZ CARLTON HOTEL DEVELOPMENT

HIGHLY VISIBLE  
SIGNAGE  
OPPORTUNITY



## STEVENS BUILDING

812 SW WASHINGTON ST

DAN BOZICH | BRIAN GREELEY | 503.228.3080  
URBANWORKSREALESTATE.COM



# STEVENS BUILDING



## Address

812 SW Washington St

## Area

Downtown PDX

## Space

4,246 SF

## Uses

Retail

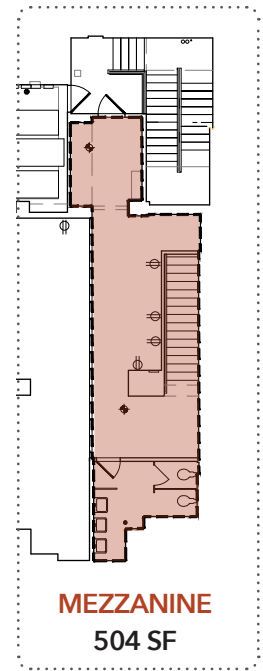
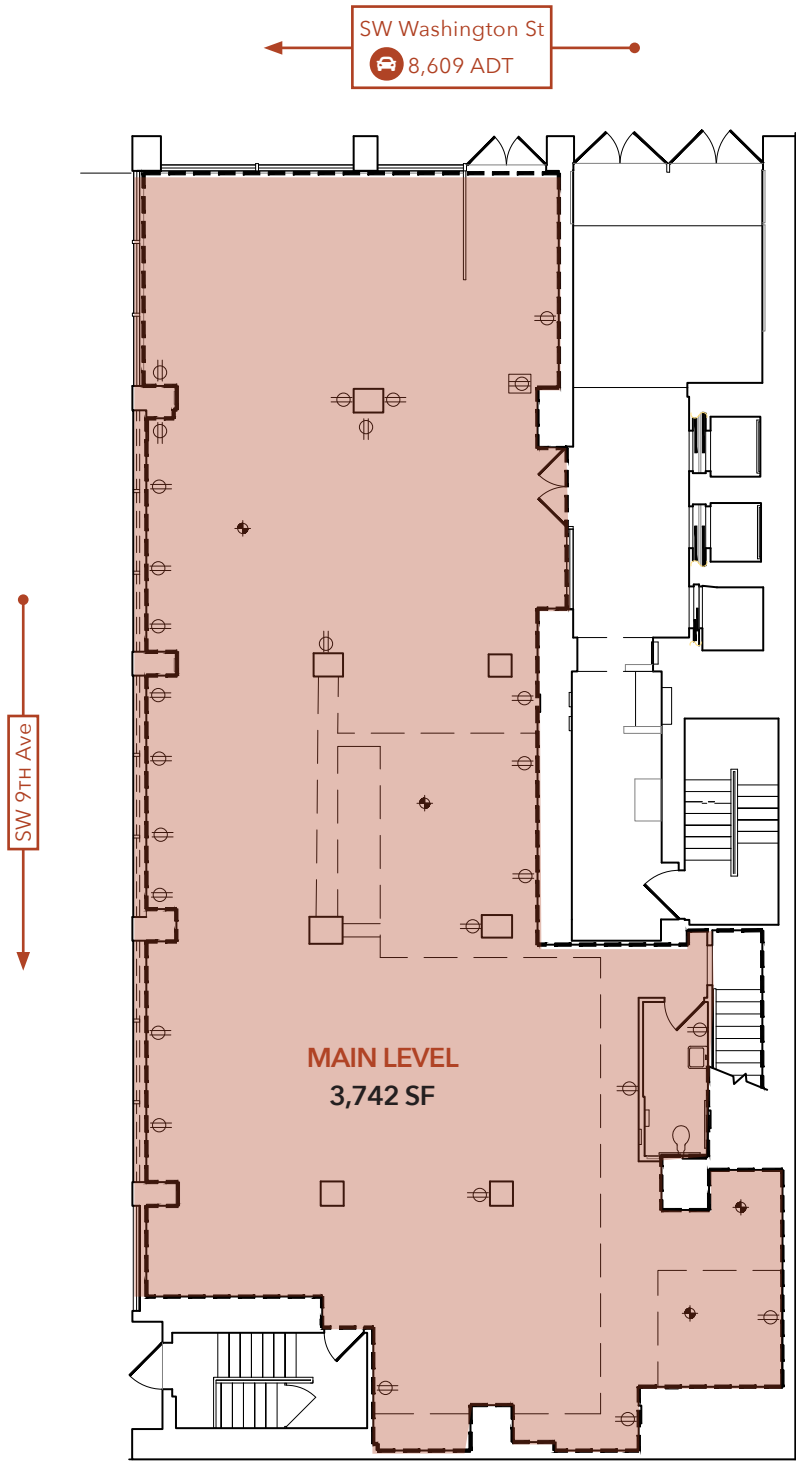
## About the Space

Prime retail space located in Portland's West End shopping district. Located adjacent to the new Ritz Carlton Hotel development, and shadow anchored by a new 8,000 SF Food Hall. The space is located between Broadway and the West End, boasting strong traffic counts on SW Washington St.

**\* Please call for pricing information**



# FLOOR PLAN





# NEIGHBORHOOD



Demographics	¼ Mile	½ Mile	1 Mile
2021 Population	3,027	14,184	48,254
Total Employees	27,337	75,432	112,263
Total Businesses	2,229	5,573	9,048
Median Household Income	\$26,328	\$42,752	\$60,849
Median Age	40.3	39.9	36.1
Any College	73.7%	79.6%	84.5%



Jake's Grill



**THE RITZ-CARLTON**  
DELIVERY 2022

New Ritz Carlton Hotel Development



Ringler's Annex



Bullard



Target



Ace Hotel



Cheryll's on 12th



# THE WEST END

