

FOR LEASE

URBAN
WORKS

BROADSTONE
REVEAL



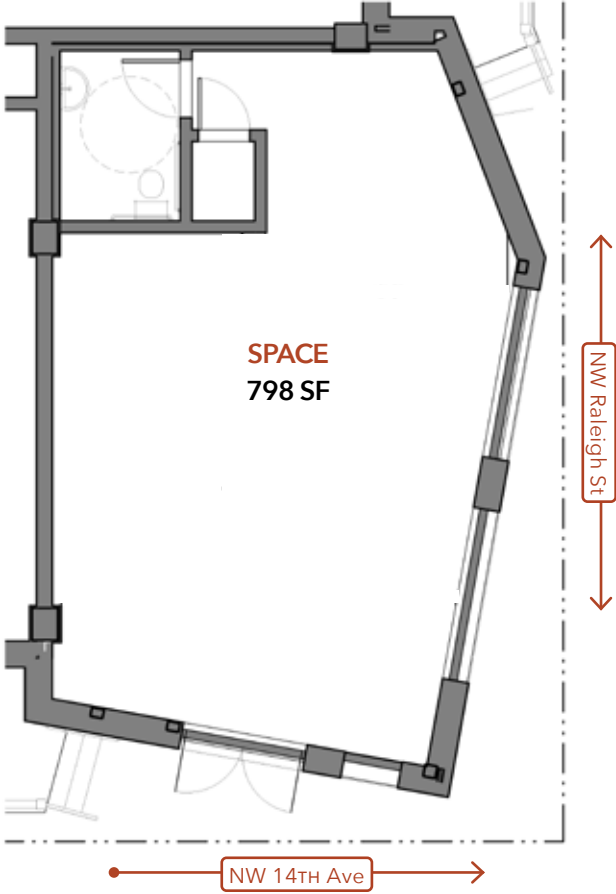
1411 NW QUIMBY

798 SF VANILLA SHELL SPACE AVAILABLE

TYLER BRUSS | BRIAN GREELEY | 503.228.3080
URBANWORKSREALESTATE.COM



Address	1411 NW Quimby St
Available	Now
Space	798 SF
Uses	Cafe / Retail / Service
Finish	Vanilla Shell Delivery Q1 2022



The Space

- Reveal Apartments is a 5-story, market-rate apartment building complete with underground parking and first floor retail space.
- Located in Portland’s Pearl District and easily accessible by streetcar, this location is ideal for any retailer/service user.
- The corner opportunity facing NW 14th Ave and NW Raleigh St offers a Q1 2022 Vanilla Shell delivery including an ADA restroom and hook-up for kitchenette.

NEIGHBORHOOD



Demographics	¼ Mile	½ Mile	1 Mile
2021 Population	4,678	13,315	37,729
Total Employees	3,312	10,840	58,235
Total Businesses	272	1,102	5,625
Median Household Income	\$93,047	\$88,457	\$70,516
Median Age	35.9	35.3	35.8
Any College	88.9%	88.6%	86%



The Fields Park



Erath



Planet Granite



Tea Bar



Breakside



Dockside Saloon



Sisters Coffee

