

FOR LEASE

URBAN
WORKS

enso

SPACE | 1,050 RSF
AVAILABLE NOW



NW MARSHALL ST @ NW 14TH AVE

PEARL DISTRICT OFFICE / RETAIL OPPORTUNITY

KIA HARTLEY | 503.228.3080 | URBANWORKSREALESTATE.COM



Storefront

Address

1400 NW Marshall St

Area

Pearl District

Available Space

1,050 RSF

Timing

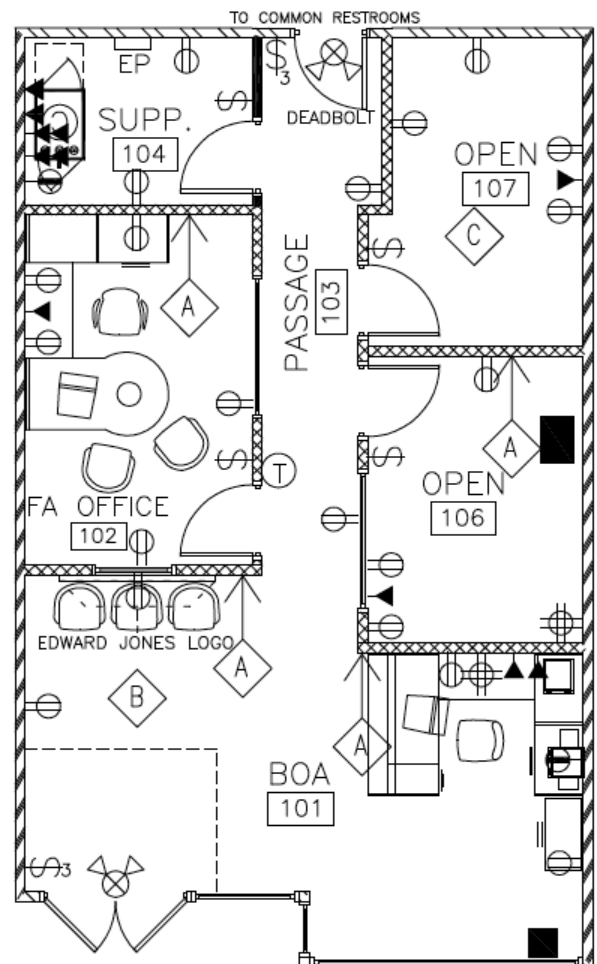
Available Now

Uses

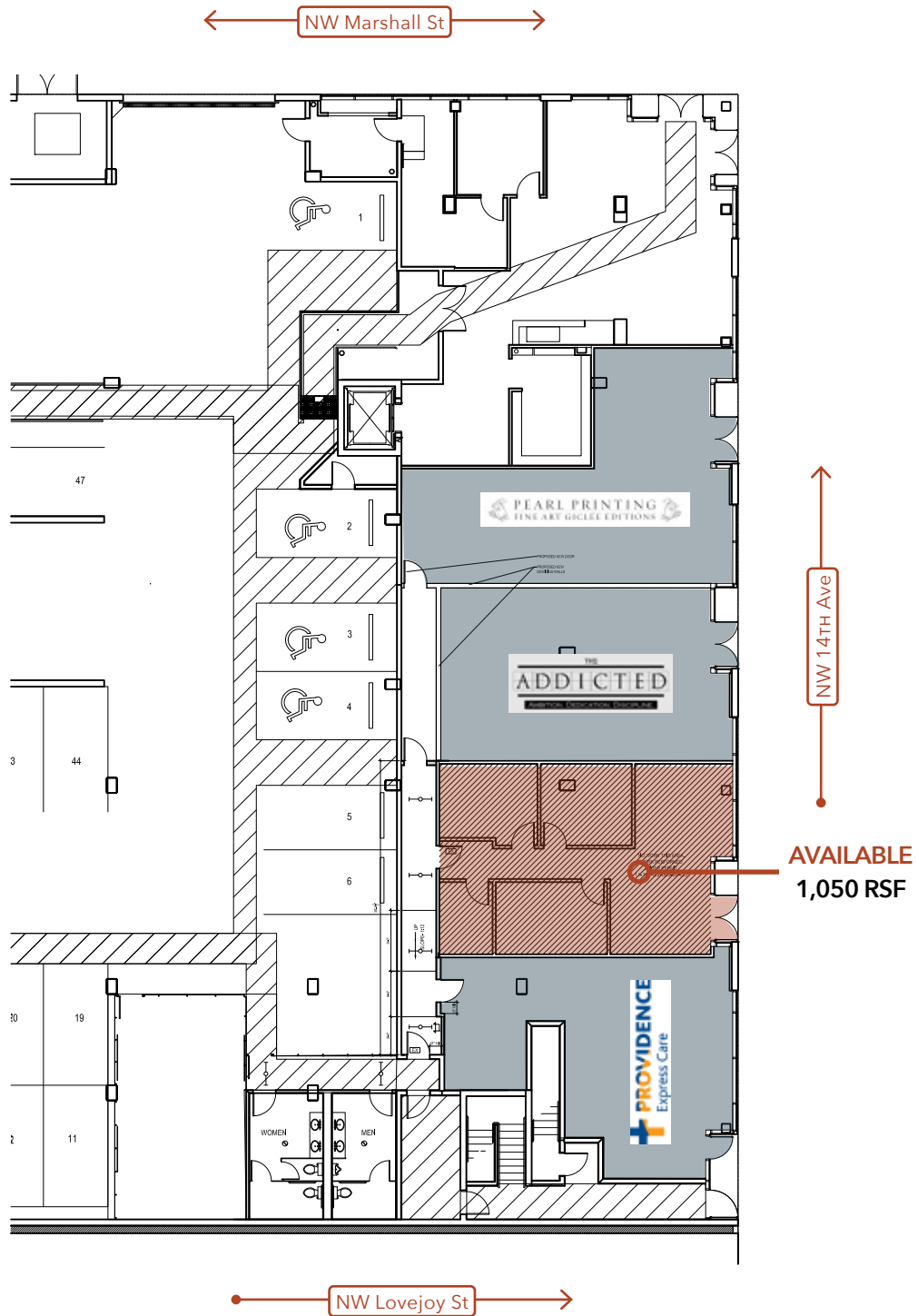
Service / Creative / Retail

About the Space

- Enso Apartments is a 6-story, 160-unit, market-rate apartment building complete with underground parking, and first floor retail space.
- Located in the heart of Portland’s Pearl District, its exterior features numerous bump-outs and balconies, accentuated by the striking integration of metal, wood and concrete exterior finishes.
- Directly across from Safeway and kitty-corner to both LA Fitness and Basics Market.
- Nestled between NW Lovejoy & Marshall & easily accessible by streetcar makes this location ideal for a retail/service user.



SITE PLAN



NEIGHBORHOOD



Demographics	¼ Mile	½ Mile	1 Mile
2021 Population	6,768	14,796	39,746
Total Employees	5,043	19,453	83,936
Total Businesses	456	1,950	7,573
Median Household Income	\$105,639	\$90,023	\$70,644
Median Age	38.1	37.3	38.4
Any College	92.7%	89.9%	86.4%



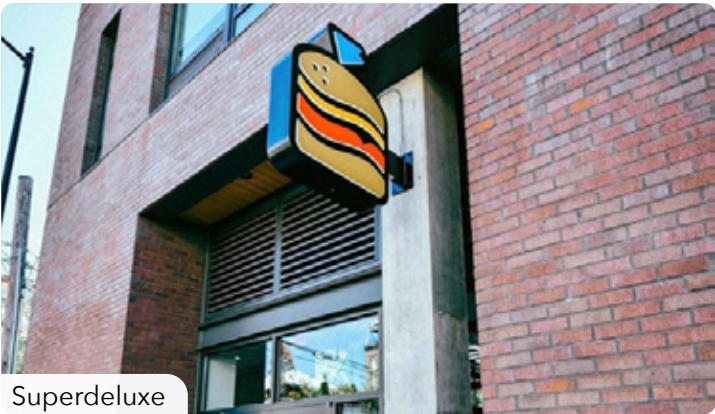
REI



Starbucks



Sisters Coffee



Superdeluxe



Safeway



Erath Tasting Room



Basics Market

RETAIL MAP



INFORMATION CONTAINED HEREIN IS FROM SOURCES DEEMED RELIABLE, BUT NOT GUARANTEED.