

FOR LEASE

URBAN
WORKS

RETAIL / OFFICE SPACE WITH OFF-STREET PARKING

AVAILABLE NOW | 1,963 RSF



RETAIL



OFFICE



SERVICE



MEDICAL

LINCOLN PLAZA

10500 SW GREENBURG RD | TIGARD, OR

DAN BOZICH | 503.228.3135
dbozich@urbanworksrealestate.com

KIA HARTLEY | 503.228.3209
khartley@urbanworksrealestate.com

urbanworksrealestate.com

LINCOLN PLAZA



Address

10500 SW Greenburg Rd

Area

Tigard / Washington Square

About the Building

- Freestanding building
- Adjacent, on-site parking
- Part of a seven building, 732,000 SF office park
- Excellent access to / from building via Highway 217
- Neighboring Margarita Factory - open now!

Available Space

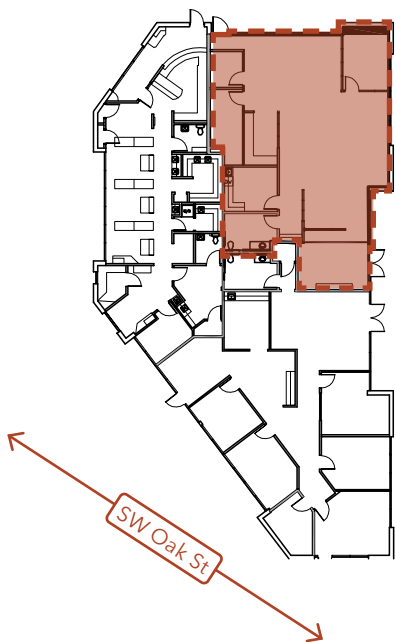
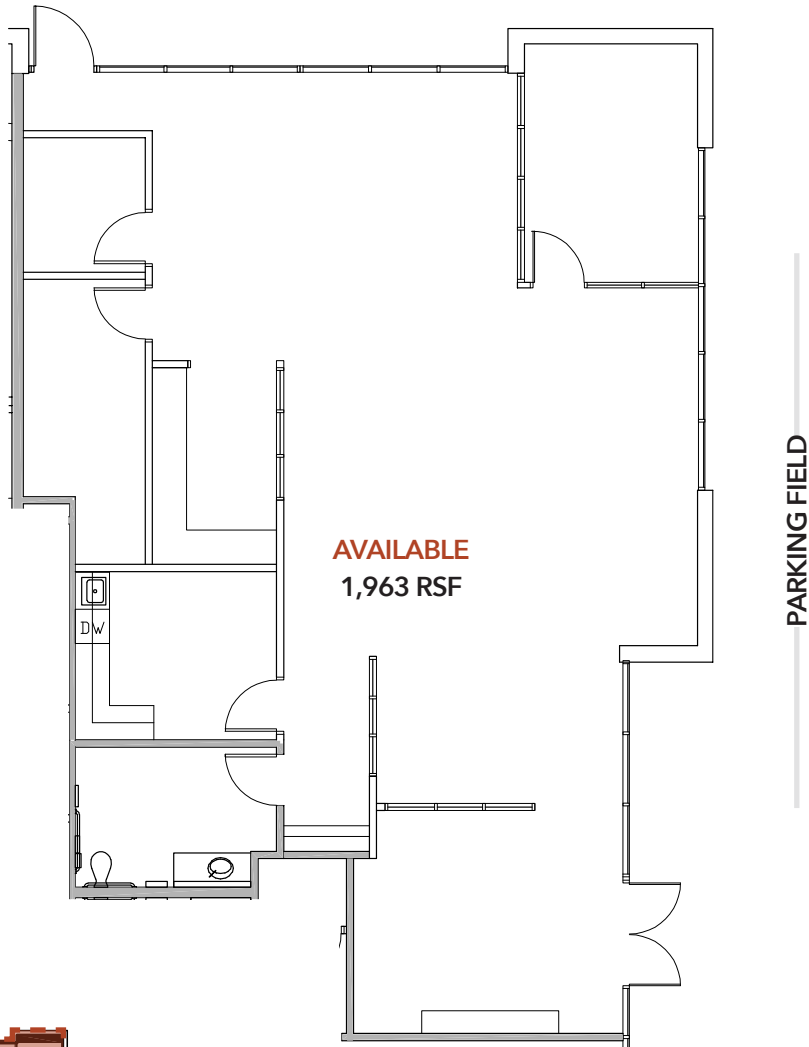
1,963 RSF

Uses

Retail / Office /
Medical / Service



FLOOR PLAN



AREA MAP

