

FOR LEASE

URBAN
WORKS

POWER + LIGHT

BUILDING

920 SW 6TH AVE



PRIME DOWNTOWN RETAIL SPACES

RANGING FROM | 1,638 SF - 2,506 SF

DAN BOZICH | 503.228.3135
dbozich@urbanworksrealestate.com

KIA HARTLEY | 503.228.3209
khartley@urbanworksrealestate.com

urbanworksrealestate.com



Suite G919 Storefront - 68 feet of glass along SW 5th Ave

Address

920 SW 6th Ave

Area

Downtown / CBD

Uses

Restaurant / Retail / Cafe

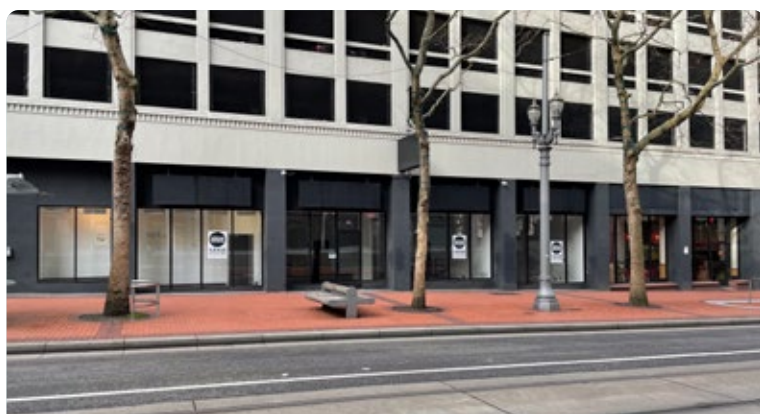
Suite G512	Suite G919	Suite G937
1,673 SF	2,506 SF	1,638 SF

About the Building

The iconic Power + Light Building sits on a full block in the heart of Downtown Portland. Built in 1928 by renowned Portland architect A.E. Doyle and Pietro Belluschi, the building is listed on the National Register of Historic Places since 1996.

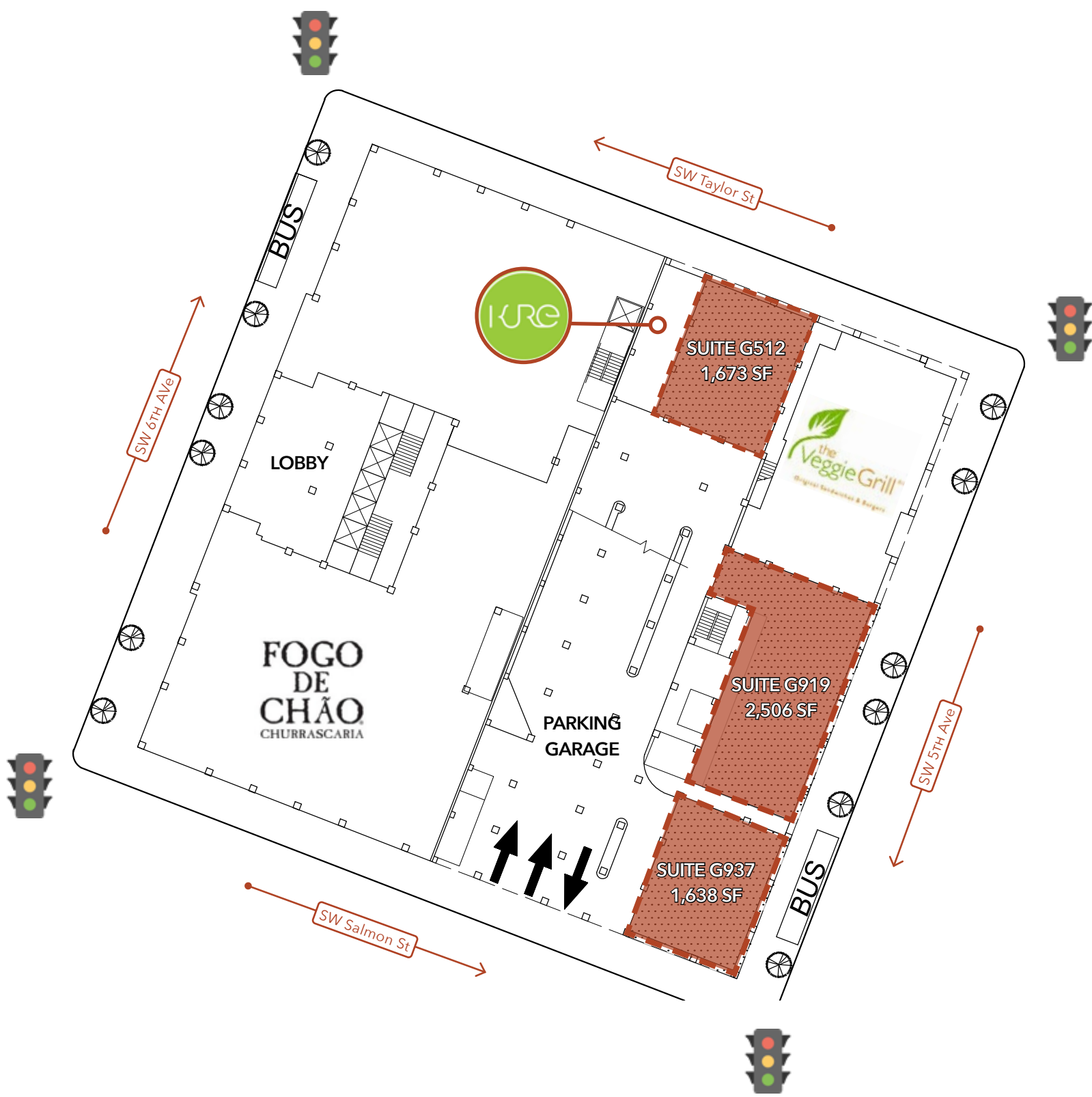


Suite G512 Storefront - Mid block along SW Taylor St



Suite G919 - Mid block between Taylor & Salmon Streets

SITE PLAN

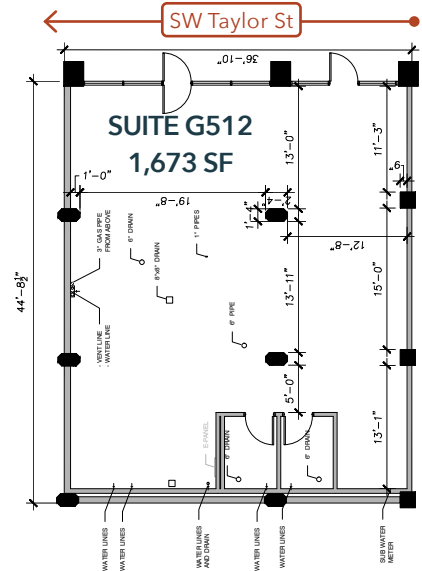
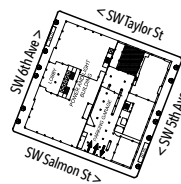


FLOOR PLANS



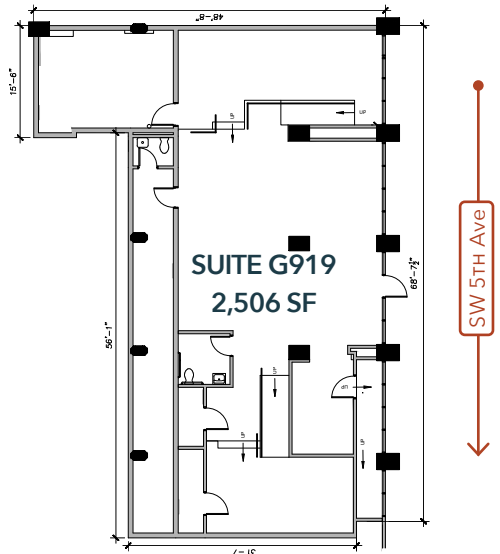
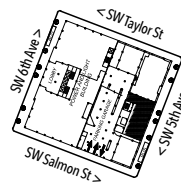
Suite G512 - 512 SW Taylor St

- Second generation restaurant
- 200 amp panel in place
- HVAC: two (2) three-ton units
- Two ADA restrooms



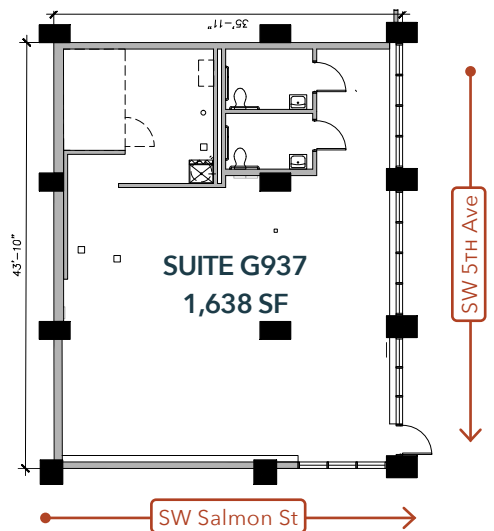
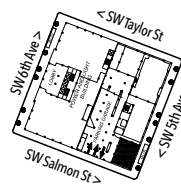
Suite G919 - 919 SW 5th Ave

- 68' of storefront glass fronting SW 5th Ave
- Second generation retail space
- Great exterior signage opportunities
- 200 amp panel in place
- HVAC: two (2) three-ton units
- One ADA restroom



Suite G937 - 937 SW 5th Ave

- Former deli space
- Corner end cap opportunity
- Signage on SW 5th Ave and SW Taylor St
- Excellent signage opportunity
- 200 amp panel in place
- HVAC: two (2) three-ton units
- Two ADA restrooms



NEIGHBORHOOD



Demographics	¼ Mile	½ Mile	1 Mile
2023 Population	1,571	11,680	38,864
Total Employees	31,936	65,333	101,535
Total Businesses	2,394	4,944	8,692
Median Household Income	\$45,332	\$41,309	\$57,104
Median Age	47.5	42.2	38.4
Any College	76.4%	77.4%	82.7%

