

# FOR LEASE

URBAN  
WORKS



## LAUREL 42

UNIT B | 721 SF

UNIT C | 803 SF

COMBINED | 1,524 SF

NOW OPEN!



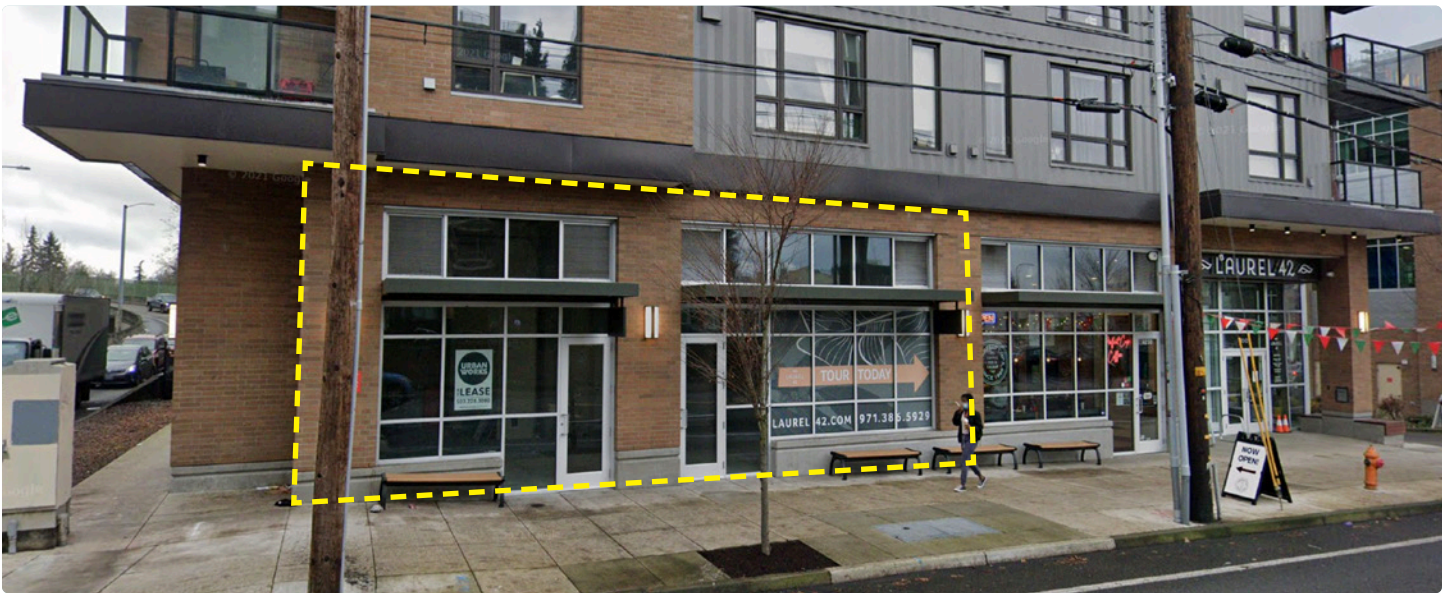
## 4242 NE HALSEY ST

### HOLLYWOOD DISTRICT RETAIL OPPORTUNITIES

TYLER BRUSS | 503.228.3274  
tbruss@urbanworksrealestate.com

KIA HARTLEY | 503.228.3209  
khartley@urbanworksrealestate.com

urbanworksrealestate.com

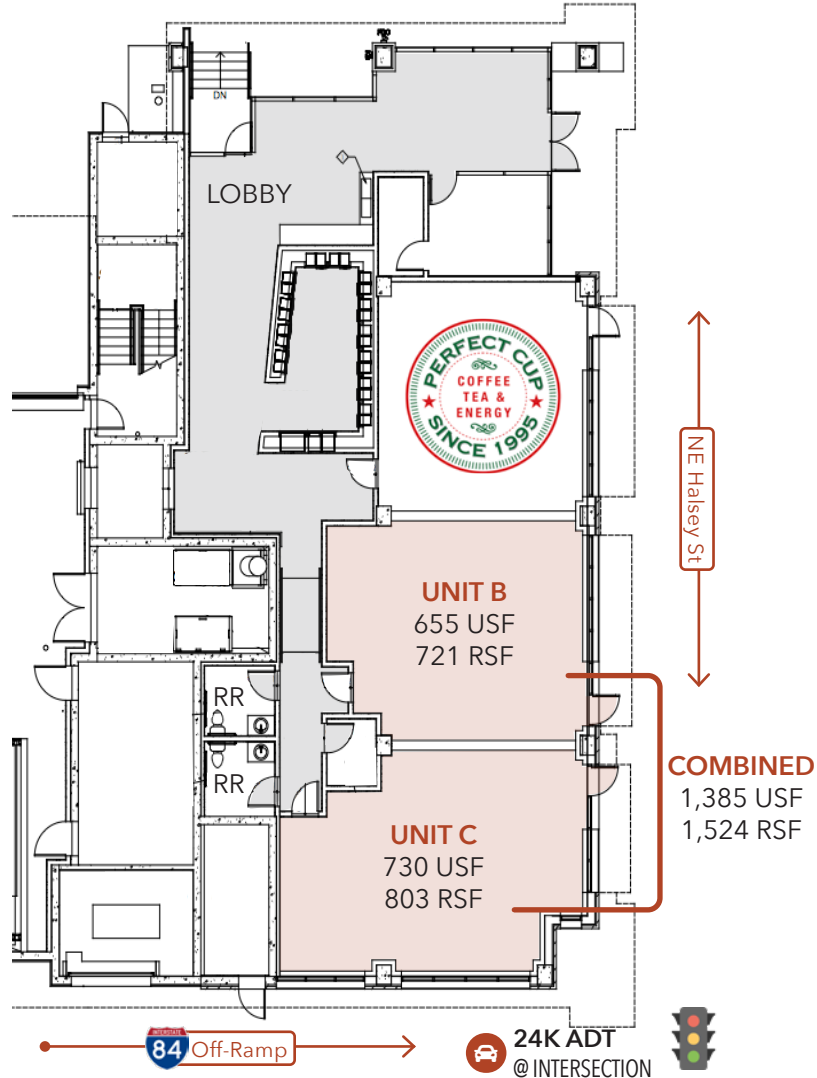


<b>Address</b>	<b>Area</b>
4242 NE Halsey St	Hollywood
<b>Available Spaces</b>	<b>Timing</b>
721 RSF - 1,524 RSF	Available Now

**Uses**  
Retail / Service / Taproom

**About the Space**  
Laurel 42 is a new multi-family project in the Hollywood District featuring 100 residential units above 2,000 square feet of ground floor retail space. The building sits conveniently between 24 Hour Fitness and Providence Portland Medical Center.

- Ideal uses include:
- Service
  - Retail
  - Salon/barber shop
  - Taproom



# NEIGHBORHOOD



Demographics	¼ Mile	½ Mile	1 Mile
2022 Population	2,072	6,741	26,124
Total Employees	2,806	5,997	16,540
Total Businesses	331	891	2,184
Median Household Income	\$83,313	\$97,475	\$105,962
Median Age	41.3	41.2	40.6
Any College	85.6%	89.1%	86.5%



Trader Joe's



Hollywood Theater



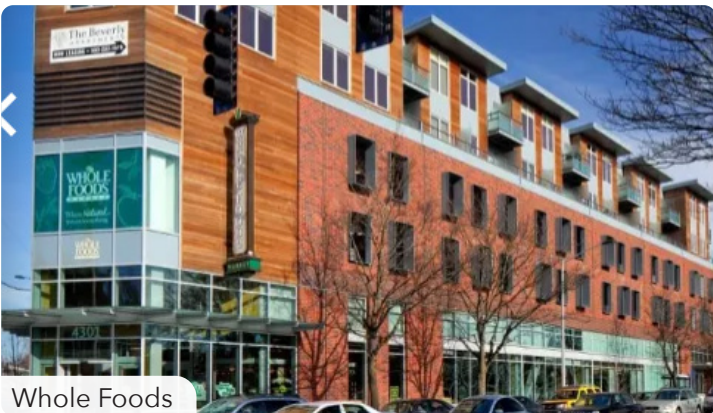
Fleur de Lis Bakery



Shandong



Knowfront



Whole Foods

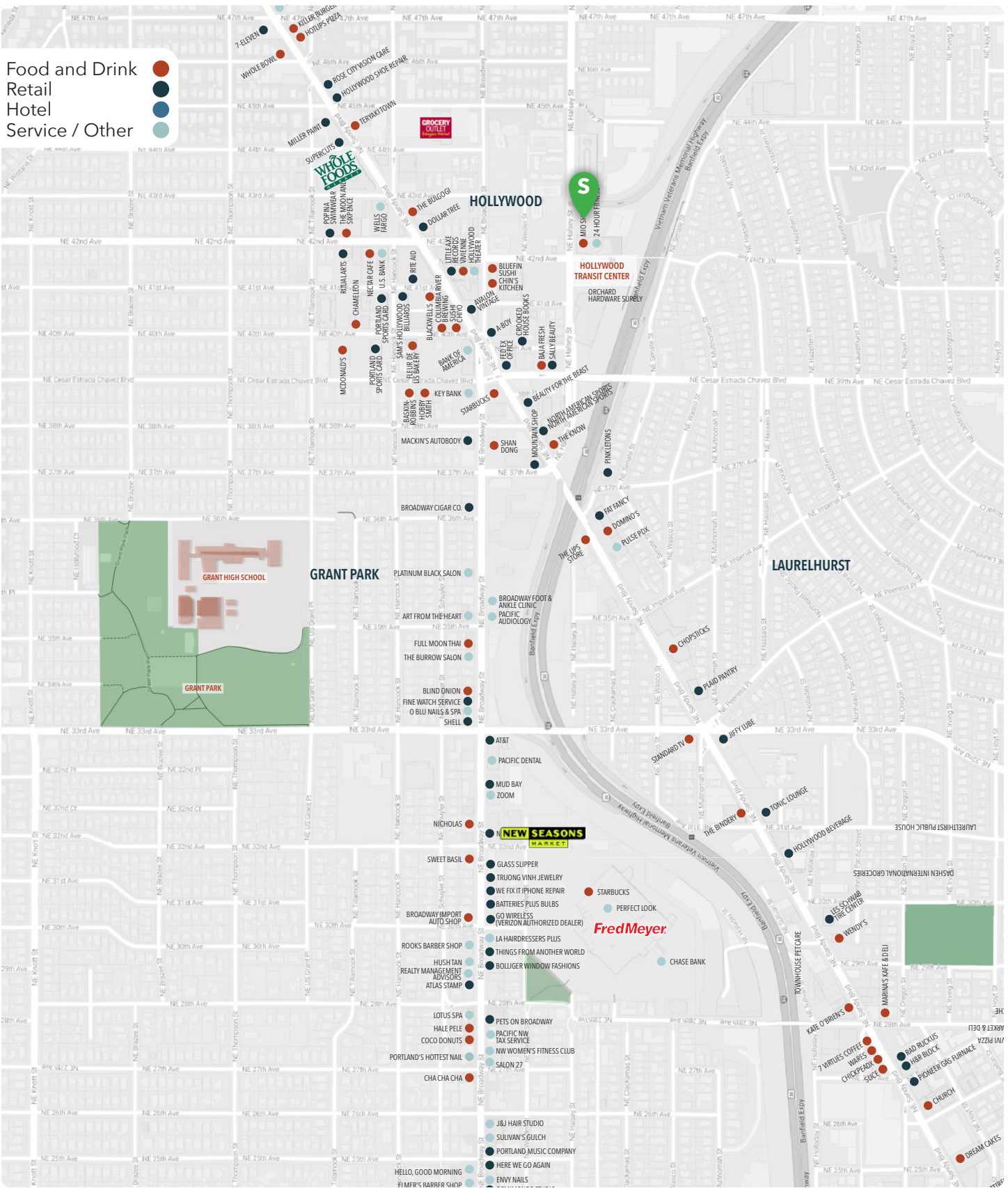


Starbucks

# RETAIL MAP



Food and Drink  
Retail  
Hotel  
Service / Other



INFORMATION CONTAINED HEREIN IS FROM SOURCES DEEMED RELIABLE, BUT NOT GUARANTEED.