



FOR LEASE

1405 NE HALSEY ST



1200 NE BROADWAY



LLOYD'S STATION

**HIGH VISIBILITY END CAP OPPORTUNITIES WITH AMPLE PARKING
GROCERY ANCHORED RETAIL CENTER IN THE LLOYD DISTRICT
SPACES RANGING FROM 1,422 SF - 11,703 SF**

DAN BOZICH | 503.228.3135
dbozich@urbanworksrealestate.com

RON DOWHANIUK | 503.228.3262
rdowhaniuk@urbanworksrealestate.com

urbanworksrealestate.com



LLOYD's STATION

ADDRESS | 1200 NE Broadway / 1405 NE Halsey

ABOUT

Lloyd's Station is centrally located within Portland's Lloyd District. The neighboring 29.3 Acre Lloyd Center Mall is currently being master replanned to include high density mixed-use retail and slated to incorporate over 5,000 new housing units.

The district is home to a large concentration of office buildings and has experienced a great deal of residential growth in recent years, making the area a true day and night destination.

AVAILABLE SUITES

SPACE D1	8,733 SF	SPACE 6	3,582 SF
SPACE D2	2,970 SF	SPACE 8	1,422 SF
COMBINED	11,703 SF	COMBINED	5,004 SF
		SPACE 40	2,228 SF



CURRENT TENANTS

SAFeway

BANK OF AMERICA

OnPoint
COMMUNITY CREDIT UNION

LA | FITNESS

FIVE GUYS
BURGERS and FRIES

DOLLAR TREE

Humana



DEMOGRAPHICS	¼ MILE	½ MILE	1 MILE
2023 POPULATION	1,778	8,472	29,871
MEDIAN HH INCOME	\$93,848	\$91	\$94,119
TOTAL BUSINESSES	293	1,044	3,396
TOTAL EMPLOYEES	2,268	15,416	36,924





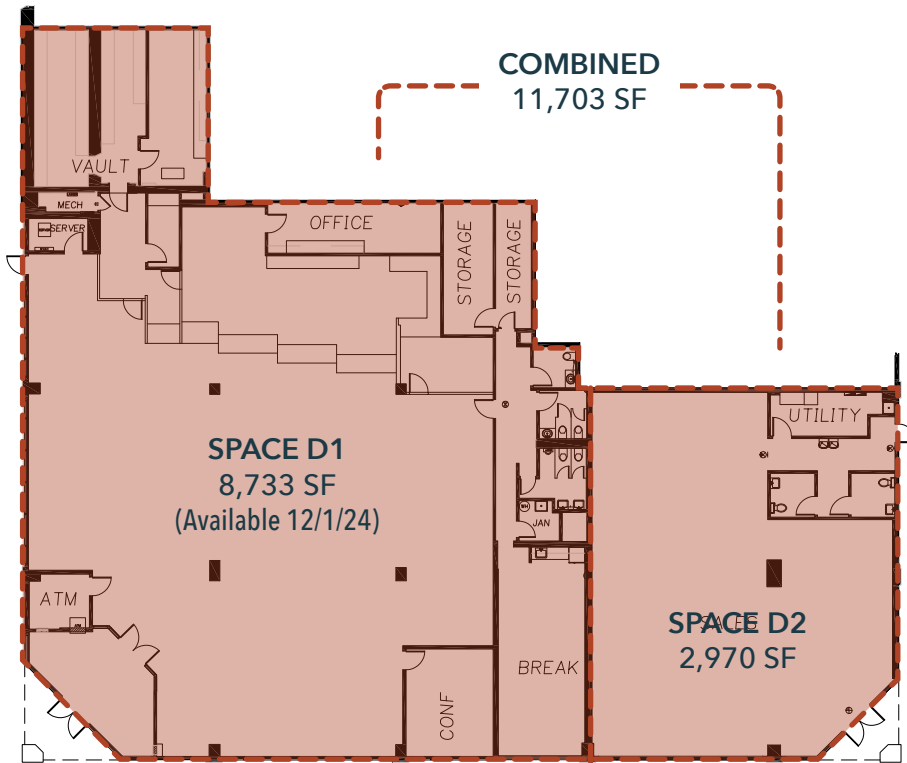
LLOYD's STATION

DETAILED SITE PLAN



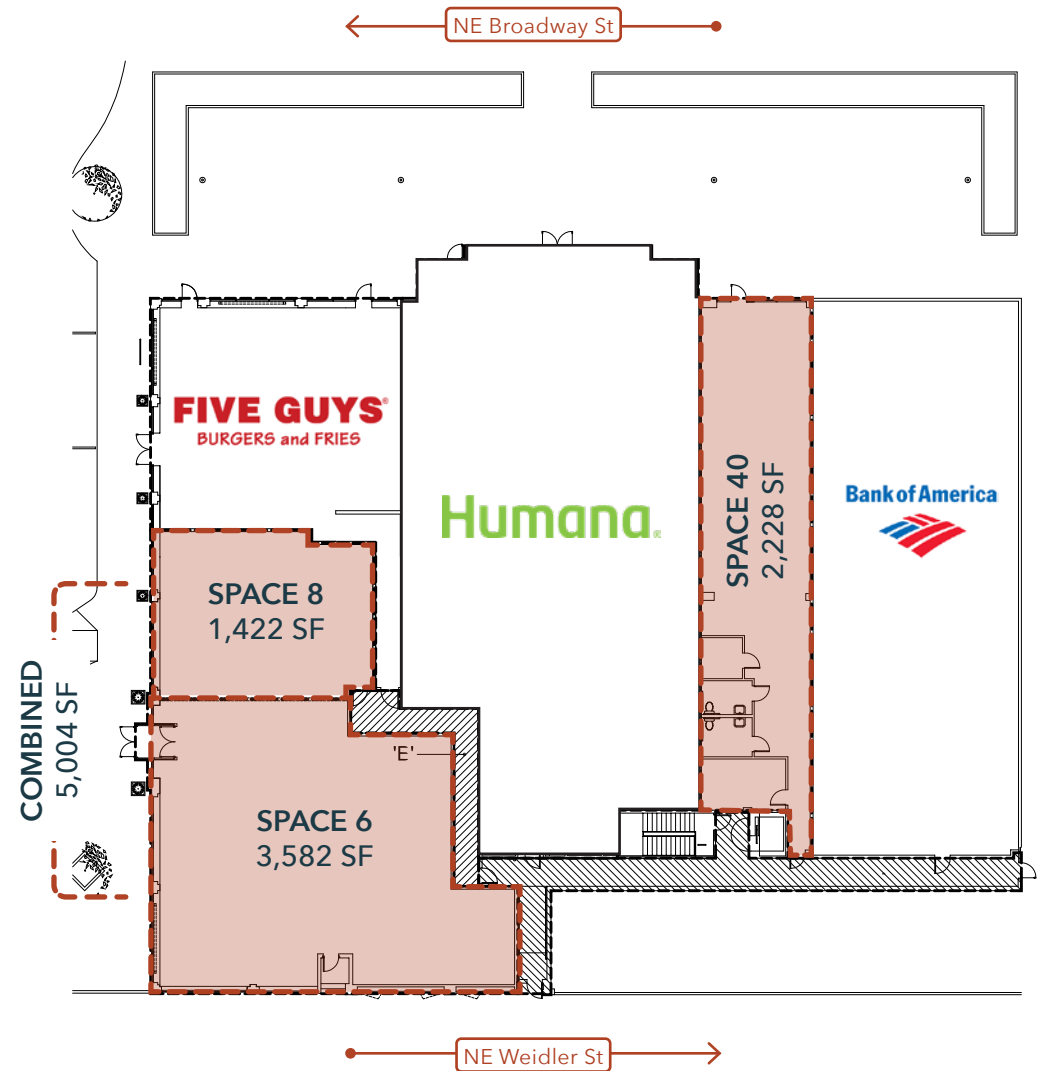


SPACE D



← NE Halsey St →

SPACES 6-8 & SPACE 40





LLOYD's STATION

AERIAL VIEW

