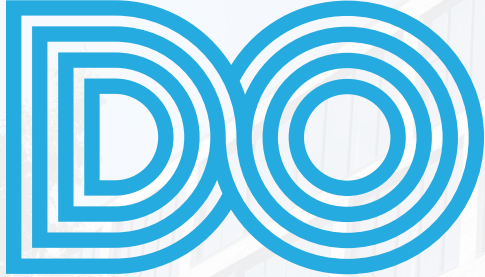


# FOR LEASE

URBAN  
WORKS



AVAILABLE | 1,713 RSF - 4,693 RSF



RESTAURANT



RETAIL



TAPROOM

## DISTRICT OFFICE

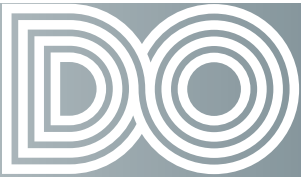
### CENTRAL EASTSIDE GROUND FLOOR RETAIL

BRIAN GREELEY | 503.228.3147  
bgreeley@urbanworksrealestate.com

TYLER BRUSS | 503.228.3274  
tbruss@urbanworksrealestate.com

urbanworksrealestate.com





## About the Space

- New, ground-up, 6-story mass timber building (cross-laminated)
- Surrounded by trendsetting eateries, micro-distilleries, breweries, coffee roasters, studios and gallery space
- Easy access to Portland Streetcar and Bus Lines
- Off-street loading
- Located across the street from a 57 room boutique hotel restoration project by Beam Development & UD+P
- In the Central Eastside there are approximately 3,250 new residential units delivered in the last 3 years
- Chase ready to receive Type 1 Hood

## Address

525 SE MLK Jr Blvd

## Area

Central Eastside

## Ground Floor Retail

1,713 RSF - 4,693 RSF

## Timing

Available Now

## Uses

Retail / Restaurant / Taproom

## Traffic Count - SE MLK Jr Blvd & SE Stark St

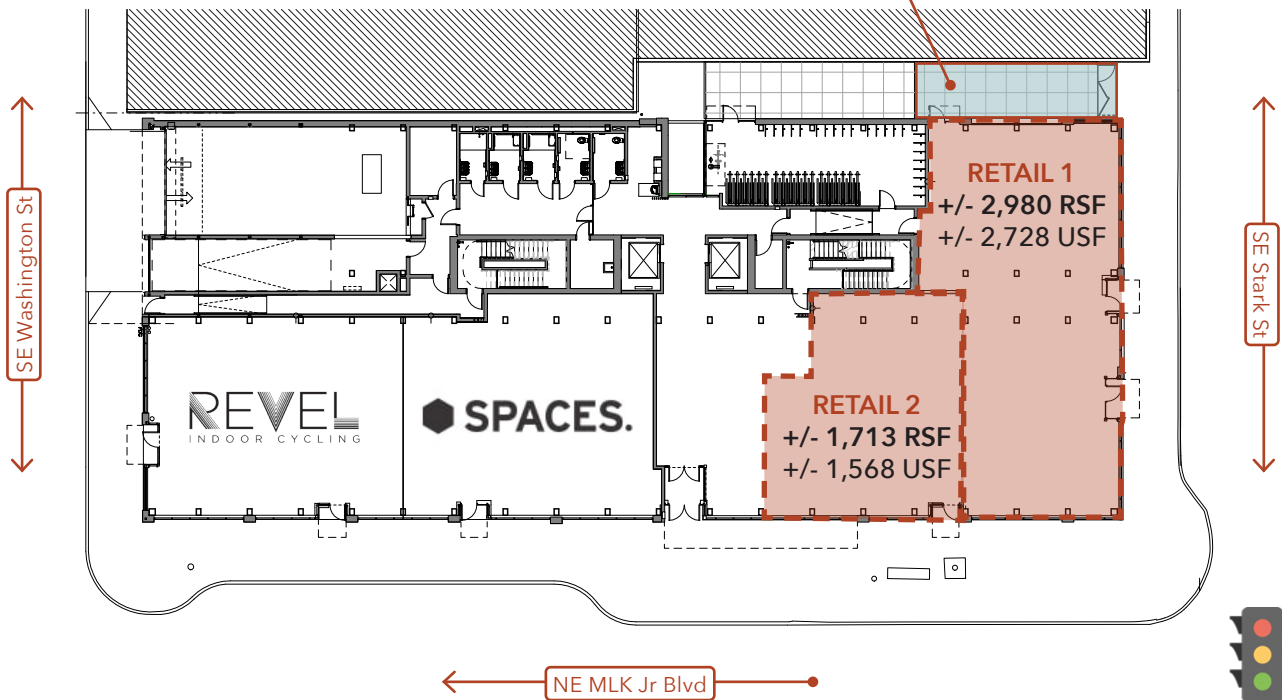
19,066 Average Daily Traffic



# SITE PLAN



RETAIL 1 PATIO SPACE



 19,066 ADT  
THRU INTERSECTION



# NEIGHBORHOOD

URBAN  
WORKS

Demographics	¼ Mile	½ Mile	1 Mile
2025 Population	1,075	4,954	33,604
Total Employees	3,915	12,894	94,848
Total Businesses	511	1,508	7,938
Median Household Income	\$59,205	\$64,544	\$70,883
Median Age	33.7	33.4	38.1
Any College	82.6%	84.5%	79.3%



City Liquidators



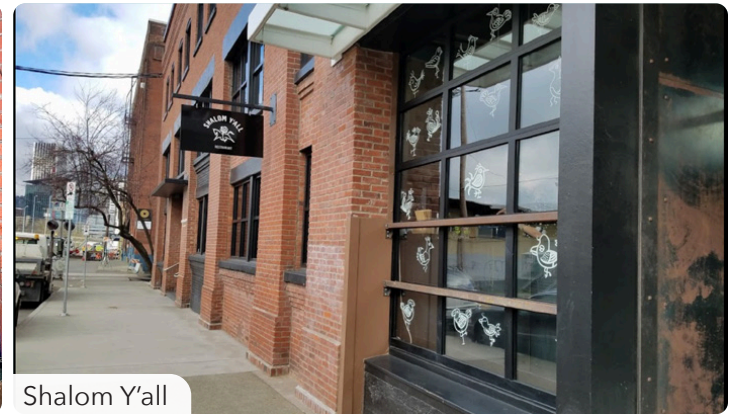
Knott Springs



Push x Pull



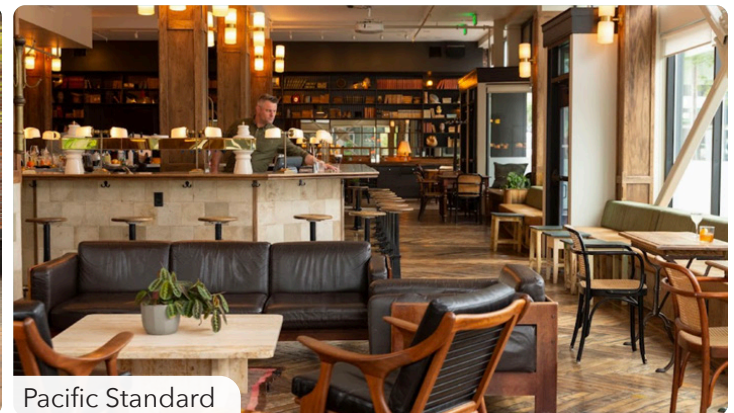
Cowbell



Shalom Y'all



Wayfinder



Pacific Standard



# RETAIL MAP

URBAN  
WORKS

