

# FOR LEASE

URBAN  
WORKS

## NEW MIXED-USE DEVELOPMENT

RETAIL OPPORTUNITIES RANGING FROM 1,963 SF - 8,261 SF



## SPLASH

NE SANDY BLVD @ NE 27TH AVE

DAN BOZICH | 503.228.3135  
dbozich@urbanworksrealestate.com

BRIAN GREELEY | 503.228.3147  
bgreeley@urbanworksrealestate.com

urbanworksrealestate.com





**Address**

NE Sandy Blvd @ NE 27th

**Area**

Close-in NE / Kerns

**Space**

1,963 SF - 8,261 SF

**Timing**

Available Q4 2024

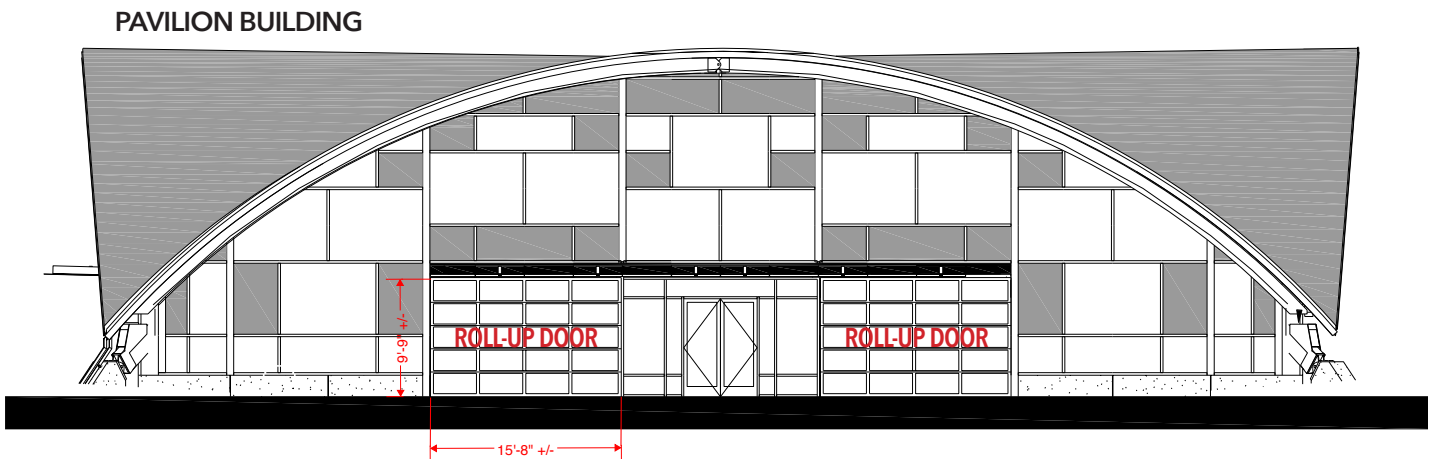
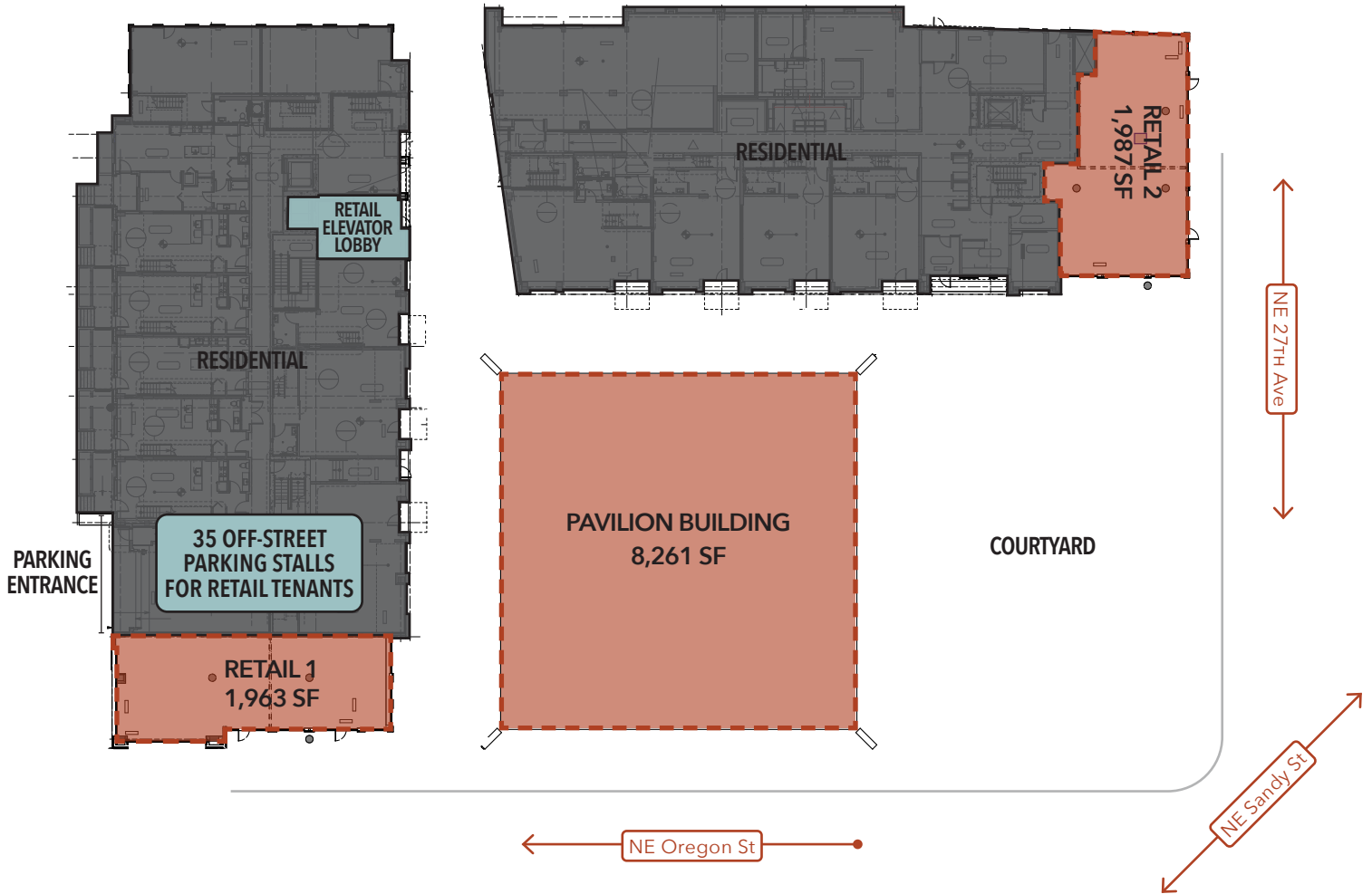
**The Development**

Exciting new development on prime corner along NE Sandy Blvd. Three retail spaces within a brand new 219 unit apartment project. 35 off-street parking spaces available for retail customers.



Pavilion Building Interior

# SITE PLAN





# NEIGHBORHOOD



Demographics	¼ Mile	½ Mile	1 Mile
2023 Population	1,624	8,538	32,192
Total Employees	1,448	9,761	35,654
Total Businesses	166	1,095	3,491
Median Household Income	\$57,278	\$65,493	\$79,147
Median Age	34.3	36.2	37.4
Any College	87.3%	86.5%	88.2%





# RETAIL MAP



INFORMATION CONTAINED HEREIN IS FROM SOURCES DEEMED RELIABLE, BUT NOT GUARANTEED.