

FOR LEASE

URBAN
WORKS



SLABTOWN SQUARE

NW 21ST AVE & NW PETTYGROVE ST



**SLABTOWN NEIGHBORHOOD RETAIL
SPACES FROM 724 SF - 4,763 SF**

BRIAN GREELEY | 503.228.3147
bgreeley@urbanworksrealestate.com

DAN BOZICH | 503.228.3135
dbozich@urbanworksrealestate.com

urbanworksrealestate.com

SLABTOWN SQUARE

URBAN
WORKS



Redefining the Retail Experience

Slabtown Square is a new mixed-use building in the heart of the emerging Slabtown neighborhood. Slabtown Square offers a unique retail opportunity to serve the residents in the 200 apartments above, as well as become a wider community destination that includes a large public courtyard and neighboring a future city park. The ground floor will assemble curated retail and culinary offerings to distinguish Slabtown Square as a premier gathering place. Retail opportunities have been strategically distributed to maximize foot traffic, sustain energy, and inspire repeat visits.

Address

2070 NW Quimby St

Area

Slabtown / NW Portland

Spaces

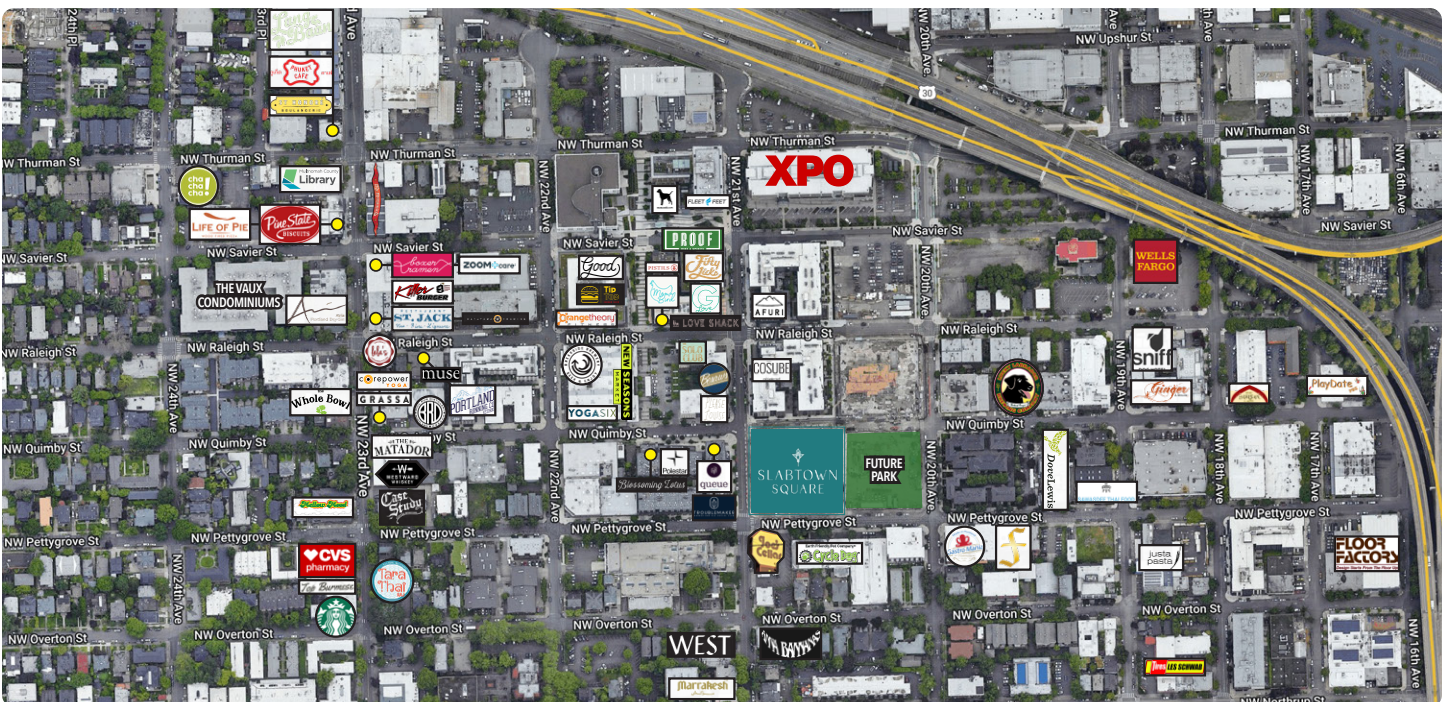
724 SF - 4,763 SF

Timing

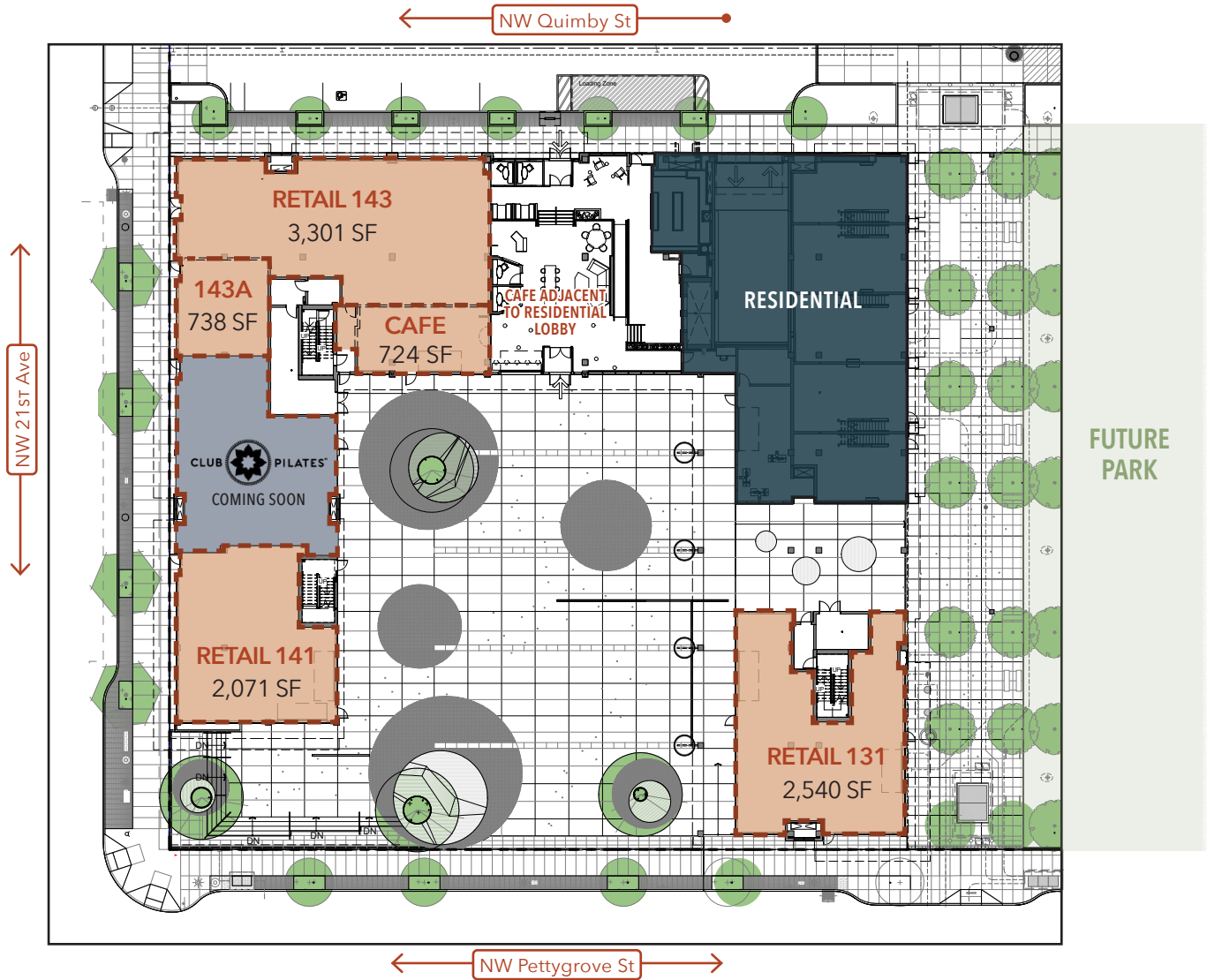
Spring 2024

Uses

Restaurant / Retail / Service



SITE PLAN



Center of Gravity

Slabtown Square will be an activated campus, fostering unity and connection between retail and residential spaces. Diverse retail floorplans offer access to NW 21st Avenue, NW Quimby Street, and NW Pettygrove Street, as well as options to open into the public courtyard or the activated residential lobby. The fluidity of space and amenities will result in a lively and spirited community environment in the heart of Slabtown.



Adjacent to Future City Park

SLABTOWN SQUARE

URBAN
WORKS



NEIGHBORHOOD



Demographics	¼ Mile	½ Mile	1 Mile
2023 Population	3,850	13,797	35,165
Total Employees	4,478	15,455	48,315
Total Businesses	479	1,744	5,096
Median Household Income	\$65,017	\$84,619	\$81,894
Median Age	39.9	37.5	38.3
Any College	94.3%	91.1%	89.1%



New Seasons



Breakside



Besaws



Matador



Good Coffee



St Jack



G Love

RETAIL MAP

