

FOR LEASE

URBAN
WORKS

Sitka
APARTMENTS

SPACE | 1,625 SF
AVAILABLE NOW



1104 NW OVERTON

CORNER PEARL DISTRICT RETAIL / OFFICE SPACE

BRIAN GREELEY | 503.228.3147
bgreeley@urbanworksrealestate.com

TYLER BRUSS | 503.228.3274
tbruss@urbanworksrealestate.com

urbanworksrealestate.com

THE SITKA



About the Space

The Sitka Apartments is a 6 story, 209 unit affordable housing apartment building complete with ground floor retail / office. Located in the heart of Portland's Pearl District, the Sitka was designed, engineered, and constructed with careful attention to its environmental impact. The major focus of the environmental design was to reduce the use of energy and natural resources in the ongoing operation of the building. The space is located next to the busy Fields Park.

Address

1104 NW Overton

Area

Pearl District

Space

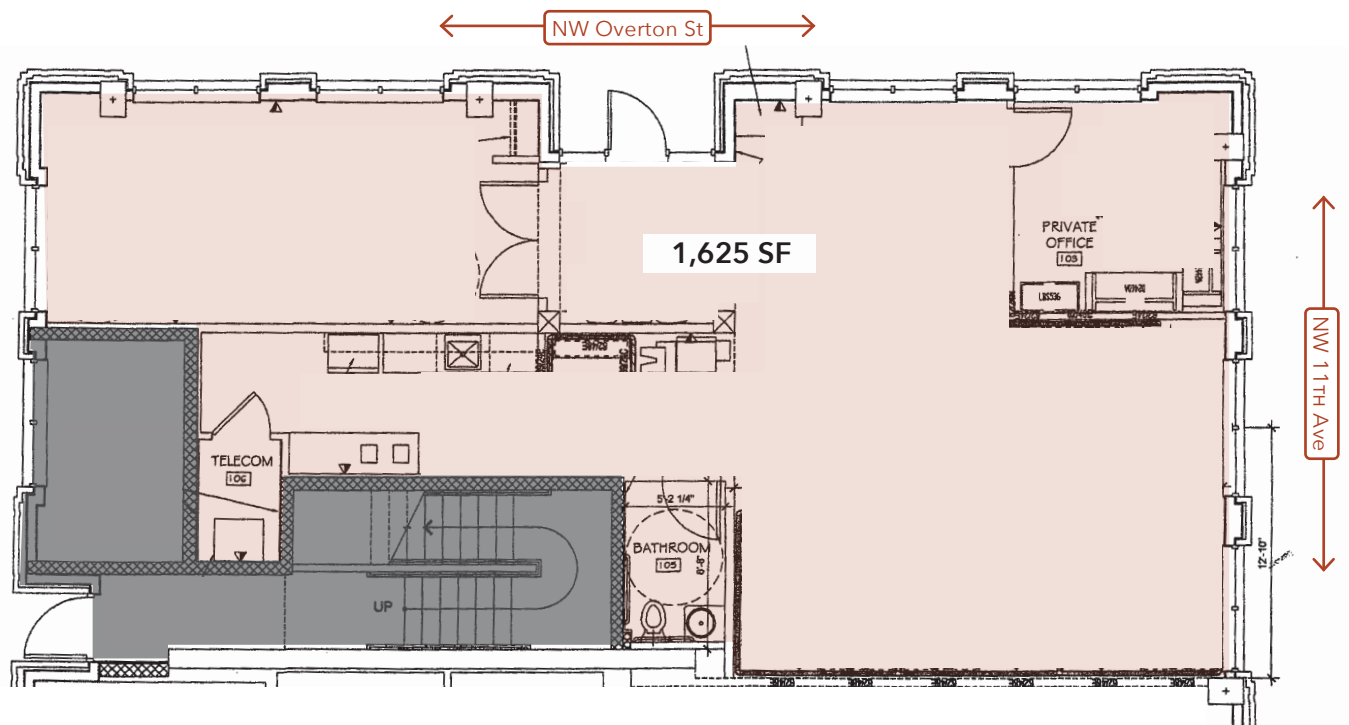
1,625 SF

Timing

Available Now

Uses

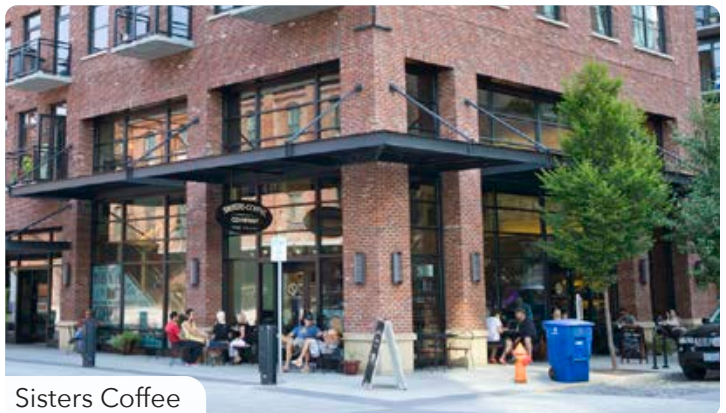
Retail / Office / Service



NEIGHBORHOOD



Demographics	¼ Mile	½ Mile	1 Mile
2023 Population	6,038	13,533	36,478
Total Employees	3,973	15,954	71,701
Total Businesses	491	1,592	6,754
Median Household Income	\$107,106	\$102,935	\$79,684
Median Age	39.8	39	38.2
Any College	88.3%	87.5%	84.5%



RETAIL MAP

URBAN
WORKS

