

# FOR LEASE

URBAN  
WORKS

## BEAVERTON

12655 SW MILLIKAN WAY

SPACE | 15,255 SF (DIVISIBLE)



## THE ROUND

### PARKING GARAGE CONDO UNIT

DAN BOZICH | 503.228.3135  
dbozich@urbanworksrealestate.com

KIA HARTLEY | 503.228.3209  
khartley@urbanworksrealestate.com

urbanworksrealestate.com



# 12655 MILLIKAN WAY



## About the Space

This 15,255 SF opportunity is on the ground floor of a six story parking garage that includes 400 parking stalls. The building sits adjacent to Beaverton City Hall and a short distance from BG's Food Cartel in the heart of The Round at Beaverton Central.

There is potential for outdoor seating on the north facing side of the premises.

## Address

12655 SW Millikan Way

## Area

Beaverton

## Space

15,255 SF (Divisible)

## Timing

Available Now

## Uses

Service / Retail / Restaurant

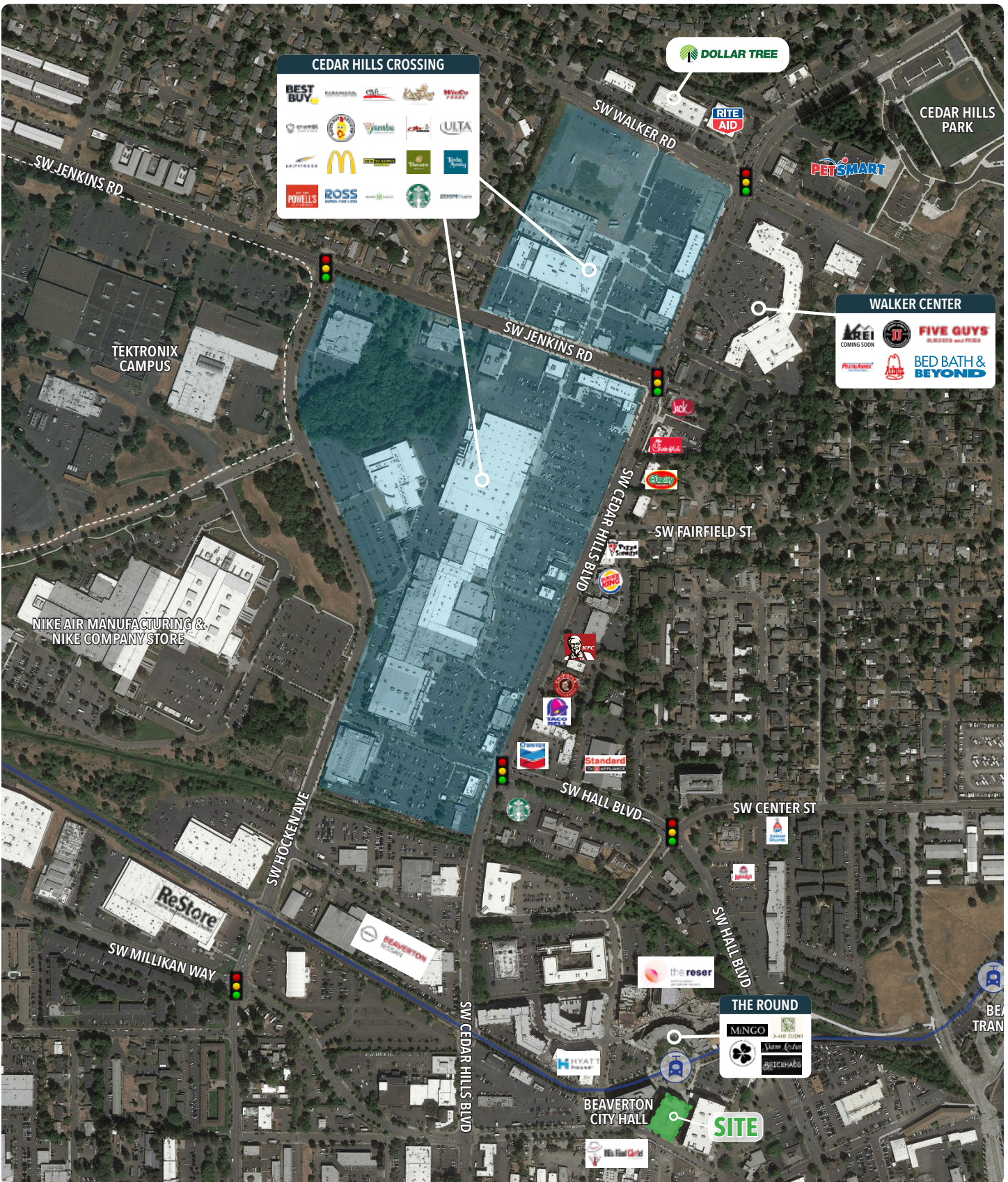








# RETAIL MAP



INFORMATION CONTAINED HEREIN IS FROM SOURCES DEEMED RELIABLE, BUT NOT GUARANTEED.