

FOR LEASE

URBAN
WORKS

**TURN-KEY
CAFE SPACE**

AVAILABLE NOW | 1,000 SF



LANGANO APARTMENTS

1445 SE HAWTHORNE BLVD

CHARLOTTE LARSON | 503.228.3165 | clarson@urbanworksrealestate.com
urbanworksrealestate.com

LANGANO APARTMENTS



About the Building

This four story mixed-use building features three floors of apartments over retail. With cutting architecture and a highly visible location on SE Hawthorne, the retail space at Langano Apartments provides an excellent opportunity to serve not only inner SE Portland, but the greater metro area.

Space Features

This space includes plumbing fixtures and casework for a small bar area. Also comes with one ADA bathroom, 100 amp electrical panel with outlets and lighting and one HVAC mini-split system.

Address

1445 SE Hawthorne Blvd

Area

Close-in SE Hawthorne

Space

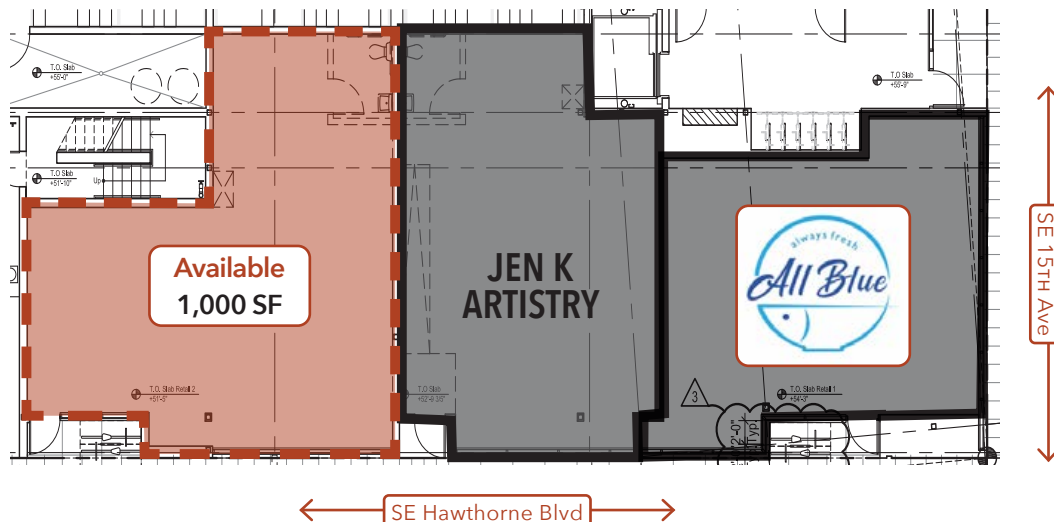
1,000 SF

Timing

Available Now

Uses

Cafe / Taproom / Retail



NEIGHBORHOOD



Demographics	¼ Mile	½ Mile	1 Mile
2023 Population	2,611	8,450	27,301
Total Employees	1,196	6,917	24,702
Total Businesses	198	1,048	3,658
Median Household Income	\$93,799	\$91,853	\$88,220
Median Age	35	35.1	35
Any College	87.8%	87%	87.1%



Nicholas



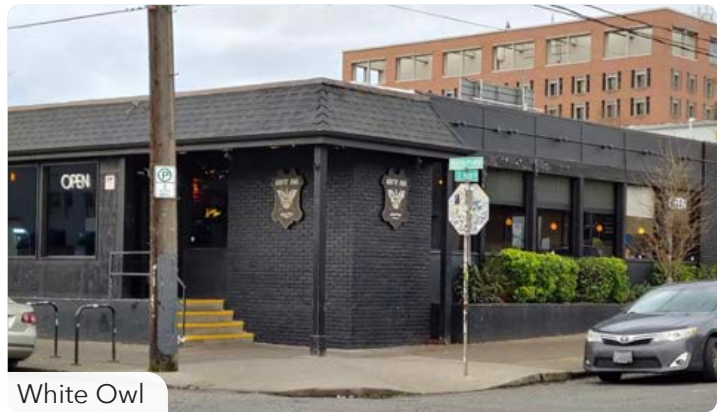
Lardo



Hawthorne Asylum



Straightaway



White Owl



Jam on Hawthorne



Cubo

RETAIL MAP

