

FOR LEASE

URBAN
WORKS



PORTLAND
ASTORIA

140 SW COLUMBIA ST



RESTAURANT



RETAIL



SERVICE

GROUND FLOOR RETAIL SPACES NEAR DOWNTOWN PORTLAND WATERFRONT

BRIAN GREELEY | 503.228.3147
bgreeley@urbanworksrealestate.com

TYLER BRUSS | 503.228.3274
tbruss@urbanworksrealestate.com

urbanworksrealestate.com

PORTLAND ASTORIA



Address

140 SW Columbia St

Area

Downtown / CBD

Spaces Ranging From

985 SF - 6,802 SF

Timing

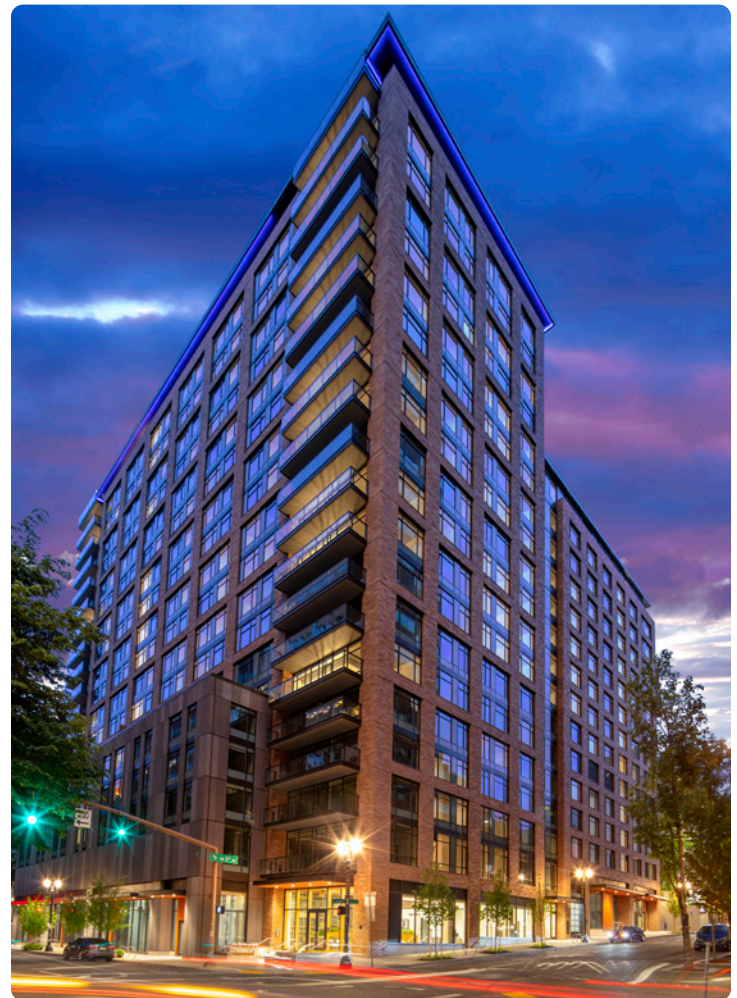
Available Now

Uses

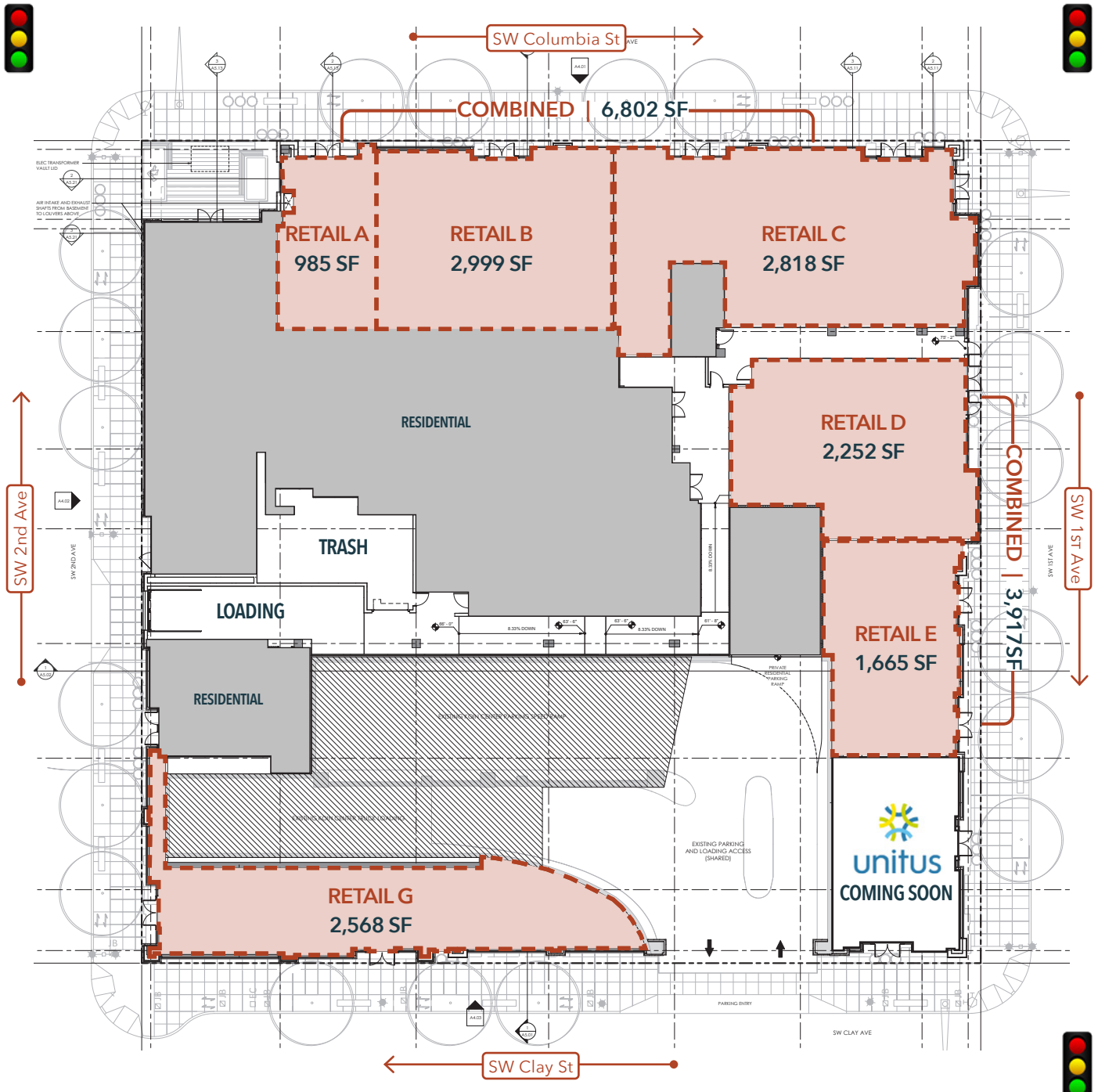
Retail / Restaurant / Service

About the Building

The Portland Astoria encompasses a full city block with 14,000 SF of ground floor retail below 348 residential units. Retail spaces are perfectly placed to capitalize on activity from the adjacent Keller Auditorium and the numerous large yearly events held at nearby Tom McCall Waterfront Park, which include the Rose Festival, Blues Festival, Pride and more. Additionally, Portland Astoria is surrounded by 800 hotel rooms in one block radius and the iconic Koin Tower where Morton's The Steakhouse recently renewed their lease and commitment to the area.



SITE PLAN



NEIGHBORHOOD



Demographics	¼ Mile	½ Mile	1 Mile
2023 Population	1,709	7,354	27,022
Total Employees	452	4,321	22,083
Total Businesses	98	681	3,178
Median Household Income	\$113,641	\$92,559	\$81,319
Median Age	38.7	36.1	35.4
Any College	89.4%	87%	86.6%



INFORMATION CONTAINED HEREIN IS FROM SOURCES DEEMED RELIABLE, BUT NOT GUARANTEED.