

FOR LEASE

URBAN
WORKS

CENTRAL EASTSIDE CREATIVE OFFICE SPACE

SUITE 202 | 2,488 RSF

AVAILABLE JULY 2024



CARGO BUILDING

75 SE YAMHILL ST, SUITE 202

CRAIG SWEITZER | 503.228.3080 | csweitzer@urbanworksrealestate.com

urbanworksrealestate.com

BUILDING SUMMARY



About the Building

Rare creative office space available in the historic and renovated Cargo Building. Building features include:

- Exposed old growth timber beams and ceilings
- Exposed brick throughout
- Skylights and new windows
- Secure entry system with callbox access control system
- Full seismic upgrade
- ADA Elevator
- Storage and parking options available

Address

75 SE Yamhill St, Suite 202

Area

Central Eastside

Space

2,488 RSF

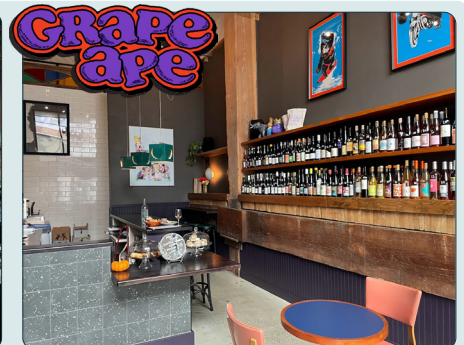
Timing

July 2024

Uses

Creative Office

Ground Floor Tenants | The Cargo Building is anchored by its namesake ground floor tenant, Cargo Inc, which features worldly imports and a curated selection of local artisan goods within its emporium. Also anchoring the building, Grape Ape, a cozy wine bar specializing in natural wines with food and other beverage options.



SUITE 202



Rates

\$22 / SF + NNN

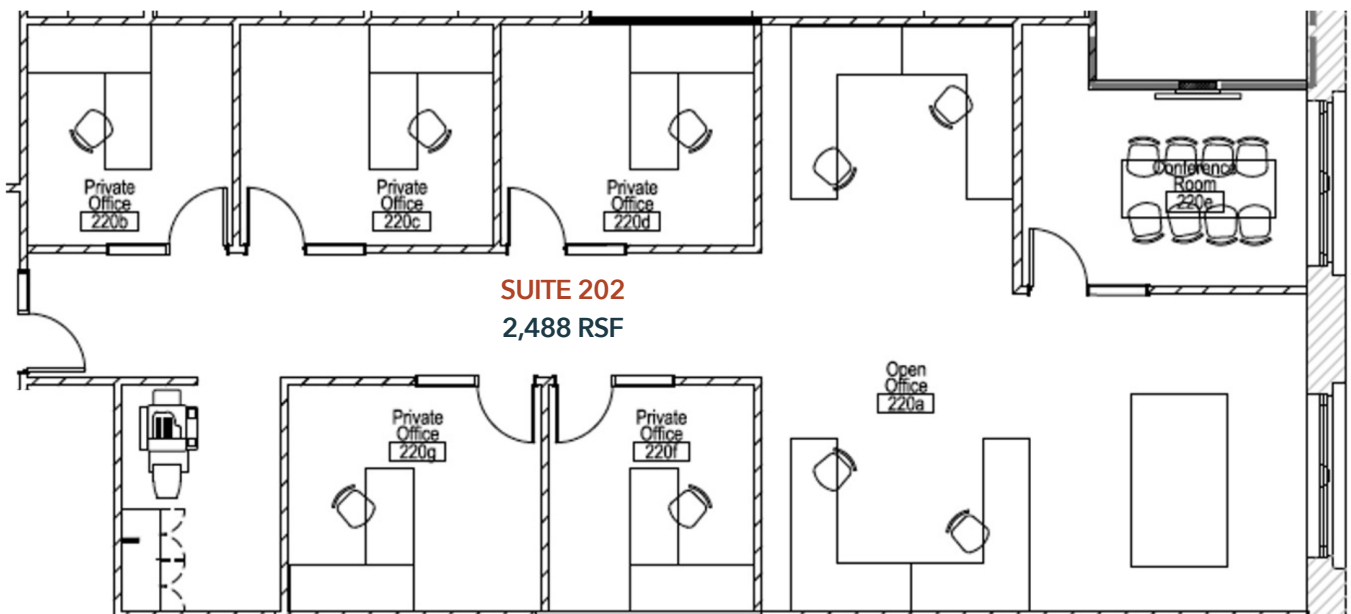
Timing

July 2024

About the Space

Light filled suite featuring:

- Five private offices / one conference room
- Open shared office or collaboration area
- Pet friendly building
- Exposed ceilings and brick
- Individually controlled HVAC
- Shared kitchenette & shower
- Parking & storage options available



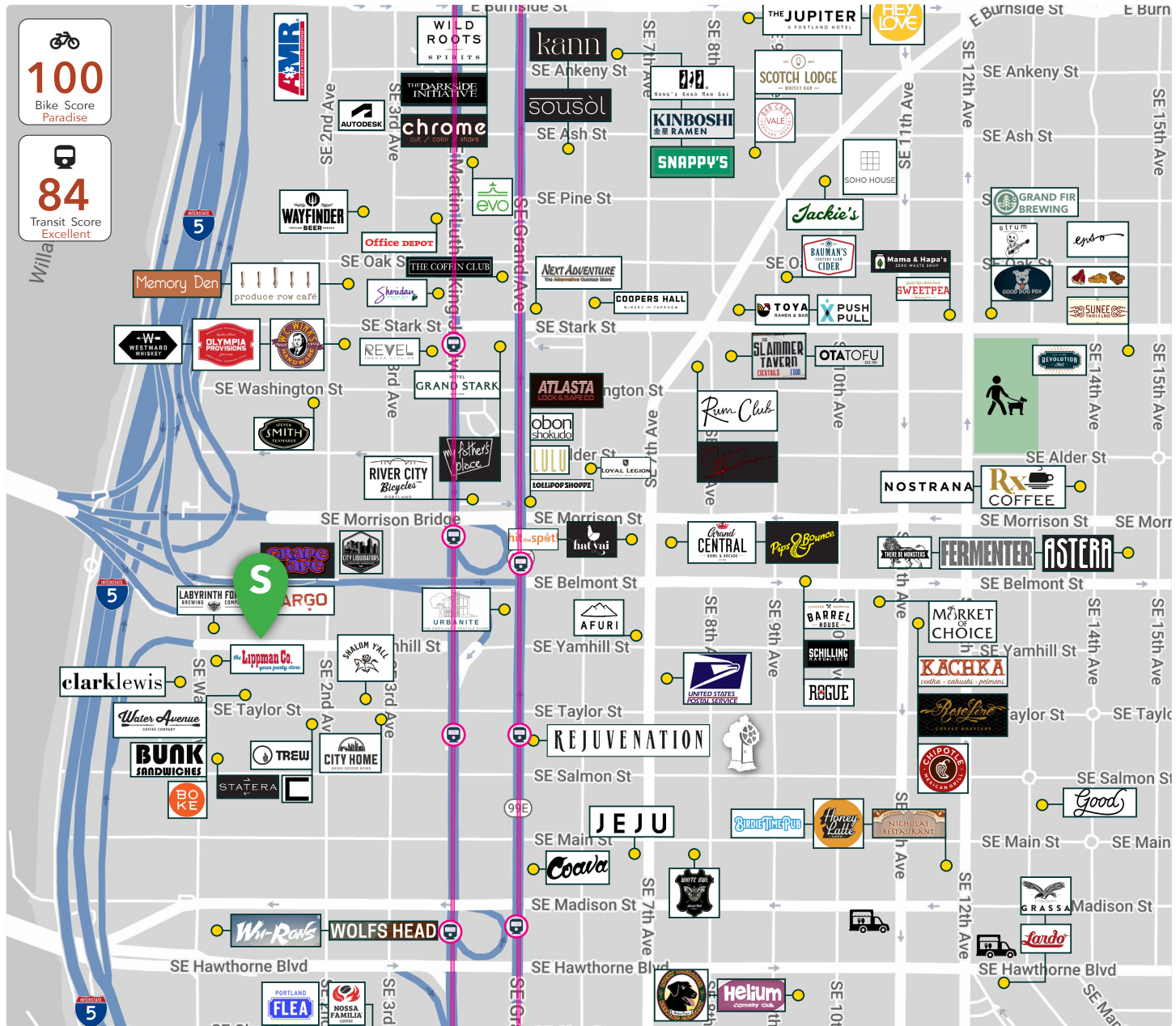
COMMON UPSTAIRS LOBBY



NEIGHBORHOOD



Central Eastside Industrial District | Encompassing over 700 acres directly across the Willamette River from Downtown, the neighborhood fosters a culture of creativity by fusing historic industrial buildings with innovative, modern mixed-use developments. Many of the city's top restaurants and boutiques call this neighborhood home and create a unique and eclectic neighborhood synergy with activity throughout the day. Visitors and employees of the district are treated to a dense collection of public murals and can easily walk/bike to the Eastbank Esplanade to enjoy some of the city's only public accesses to the river. The area is highly accessible by car, bike and public transit with the streetcar running the full length of the neighborhood, plus the convergence of many bus lines in the area.



INFORMATION CONTAINED HEREIN IS FROM SOURCES DEEMED RELIABLE, BUT NOT GUARANTEED.