

FOR LEASE

URBAN
WORKS

H 31

HAWTHORNE 31

3060 SE HAWTHORNE BLVD

YOUR SIGN

3060

welcome

GOOD
DOG!

Way to get
your human
pet for some
exercise!

DOG
FOU



MEDICAL



WELLNESS



RETAIL

TURN-KEY MEDICAL SPACE

2,293 SF - AVAILABLE NOW!

CHARLOTTE LARSON | 503.228.3165 | clarson@urbanworksrealestate.com
urbanworksrealestate.com



Address

3060 SE Hawthorne Blvd

Area

Close-in SE

Space

2,293 SF

Uses

Retail / Service

Space Features

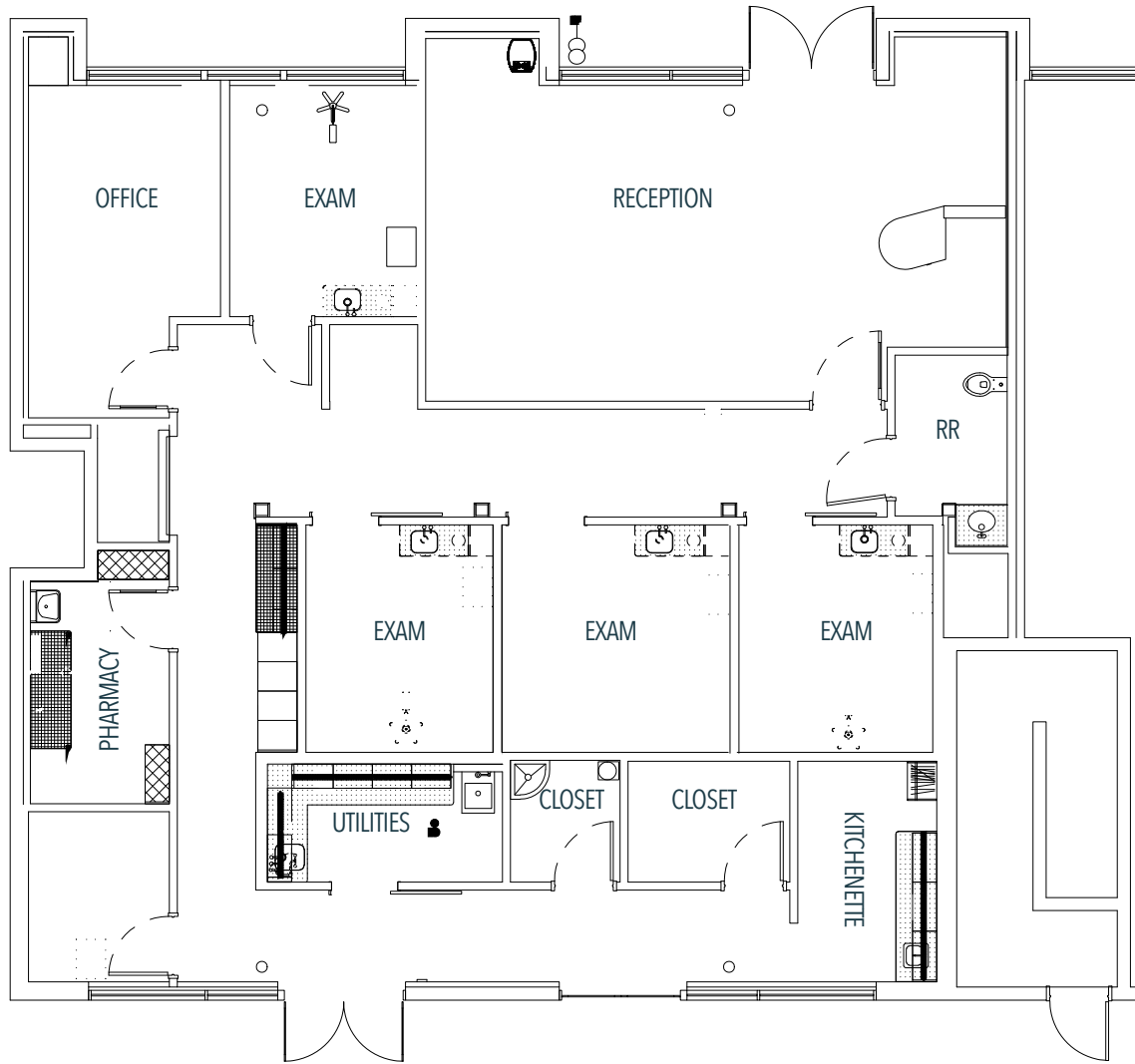
Stunning turn-key medical clinic in mint condition and featuring abundant natural light. This close in SE Portland location serves a thriving trade area. Available now!



FLOOR PLAN | 2,293 SF



← SE Hawthorne Blvd →



NEIGHBORHOOD



Demographics	¼ Mile	½ Mile	1 Mile
2023 Population	2,445	9,746	35,530
Total Employees	669	2,952	12,742
Total Businesses	168	674	2,595
Median Household Income	\$104,729	\$108,383	\$103,475
Median Age	36.7	36.6	36.3
Any College	88.8%	88.6%	89.7%



New Seasons

Inner Southeast Portland

Inner Southeast Portland is one of the most desirable destinations for residents and patrons across the metro area. With New Seasons at SE Division and 20th, this area features a thriving mix of restaurant, café, retail and service businesses. With its close-in proximity to downtown Portland and established residential neighborhoods, commercial retail spaces are always in demand in this popular commercial district. The rare retail turnover occurs with little-to-no time on market.



Cubo de Cuba

