

FOR LEASE

URBAN
WORKS

CENTRAL EASTSIDE CREATIVE WORKSPACE

AVAILABLE | 7,578 SF

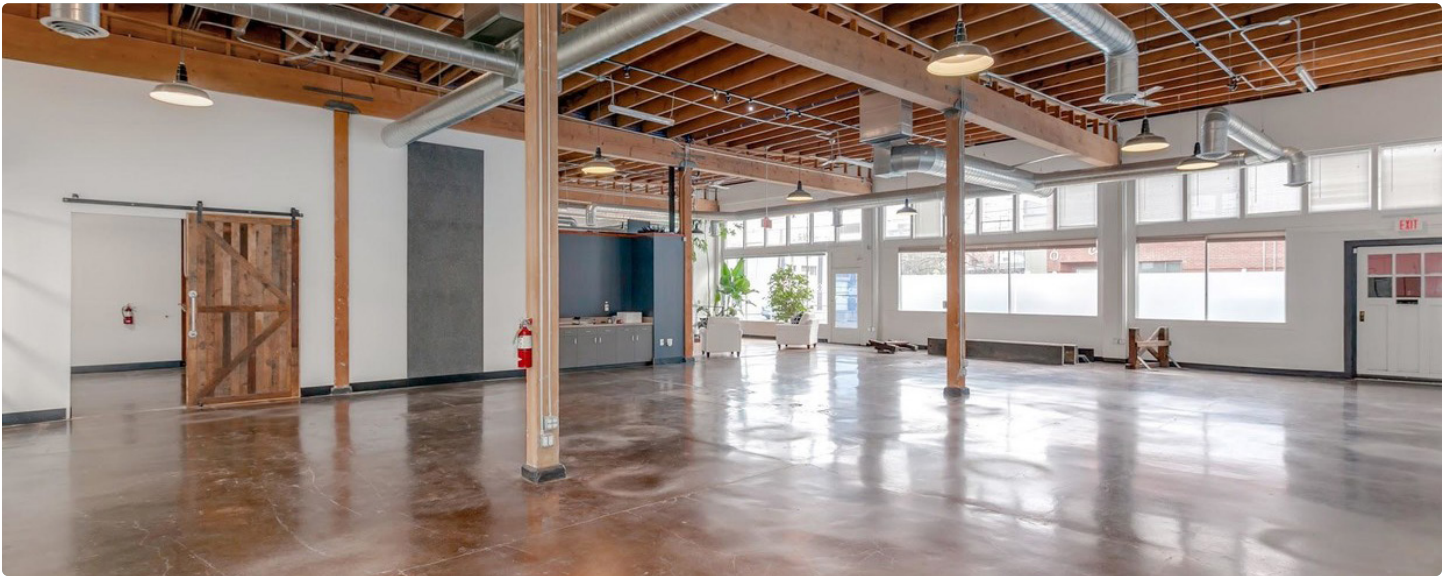


THE INMO BUILDING

603 - 619 SE 6TH AVE

CHARLOTTE LARSON | 503.228.3165 | clarson@urbanworksrealestate.com
urbanworksrealestate.com

INMO BUILDING



About the Building

Stunning renovated warehouse space featuring creative open work space, private offices, kitchen area, mezzanine level and roll up door with curb cut for loading and unloading to warehouse space.

Building Features

- Polished concrete floors and exposed timbers
- Abundant natural light and expansive window line
- Upgraded HVAC, roof and listing
- Roll up door and curb cut to warehouse space
- Two 200-amp, 3 phase electrical panels

Address

603 - 619 SE 6th Ave

Area

Central Eastside

Space

7,578 SF

Timing

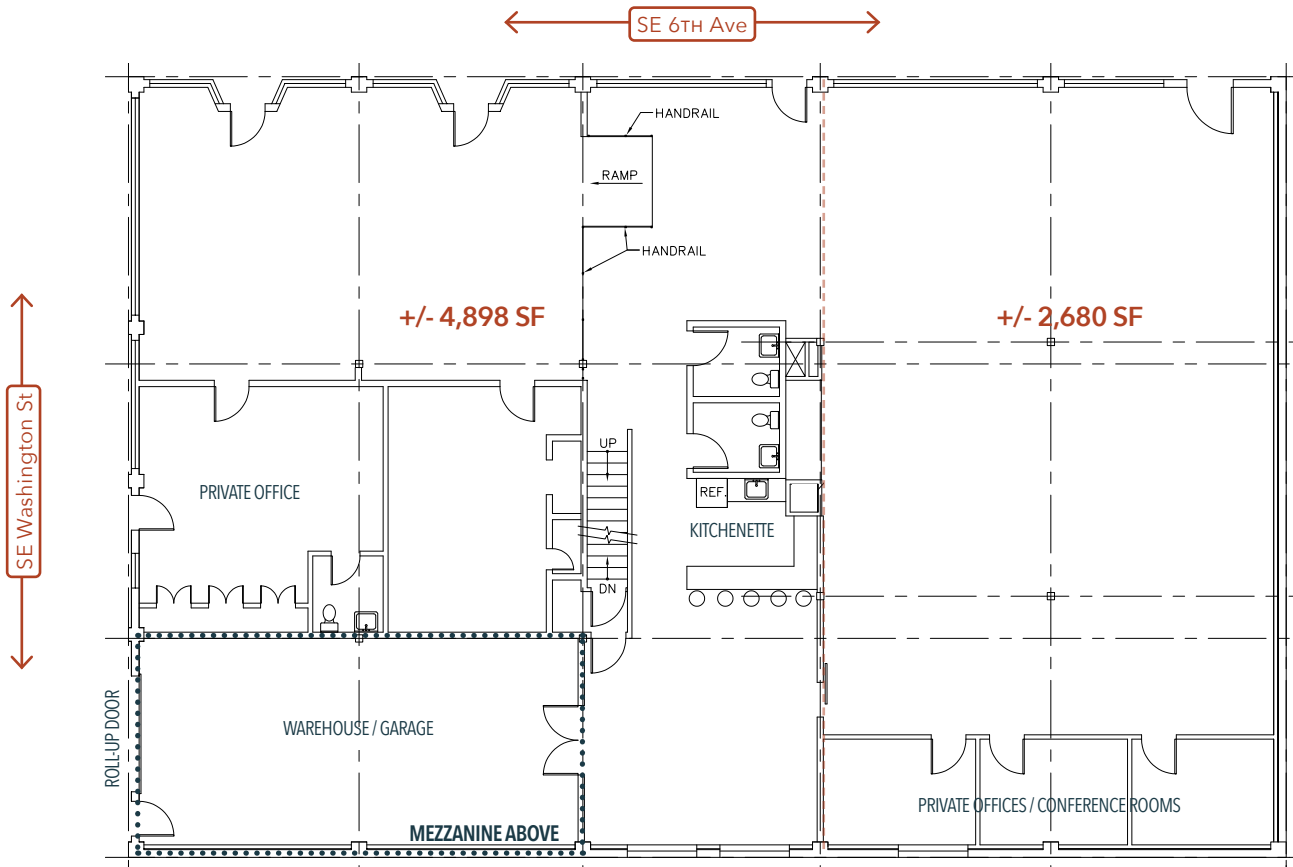
Available Now

Uses

Creative Office / Service / Retail



FLOOR PLAN



TOTAL AVAILABLE | 7,578 SF (Including 878 SF Mezzanine Space)



NEIGHBORHOOD



Demographics	¼ Mile	½ Mile	1 Mile
2023 Population	1,142	5,874	24,624
Total Employees	4,292	13,278	82,685
Total Businesses	553	1,645	6,990
Median Household Income	\$71,465	\$74,512	\$73,966
Median Age	35.9	34.5	36.4
Any College	78.9%	85.2%	83.7%



Afuri



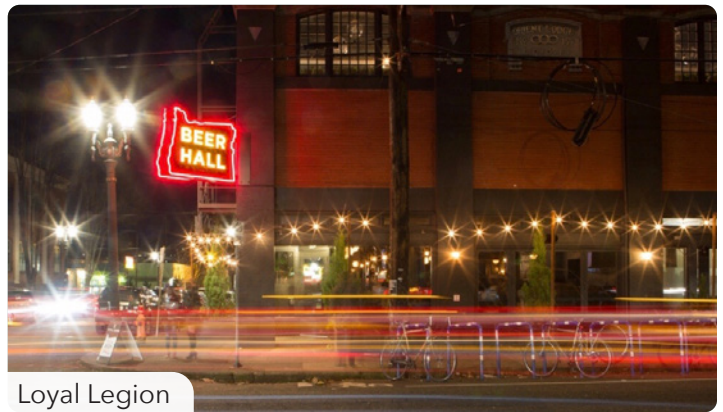
Coava



Hey Love



Nongs



Loyal Legion

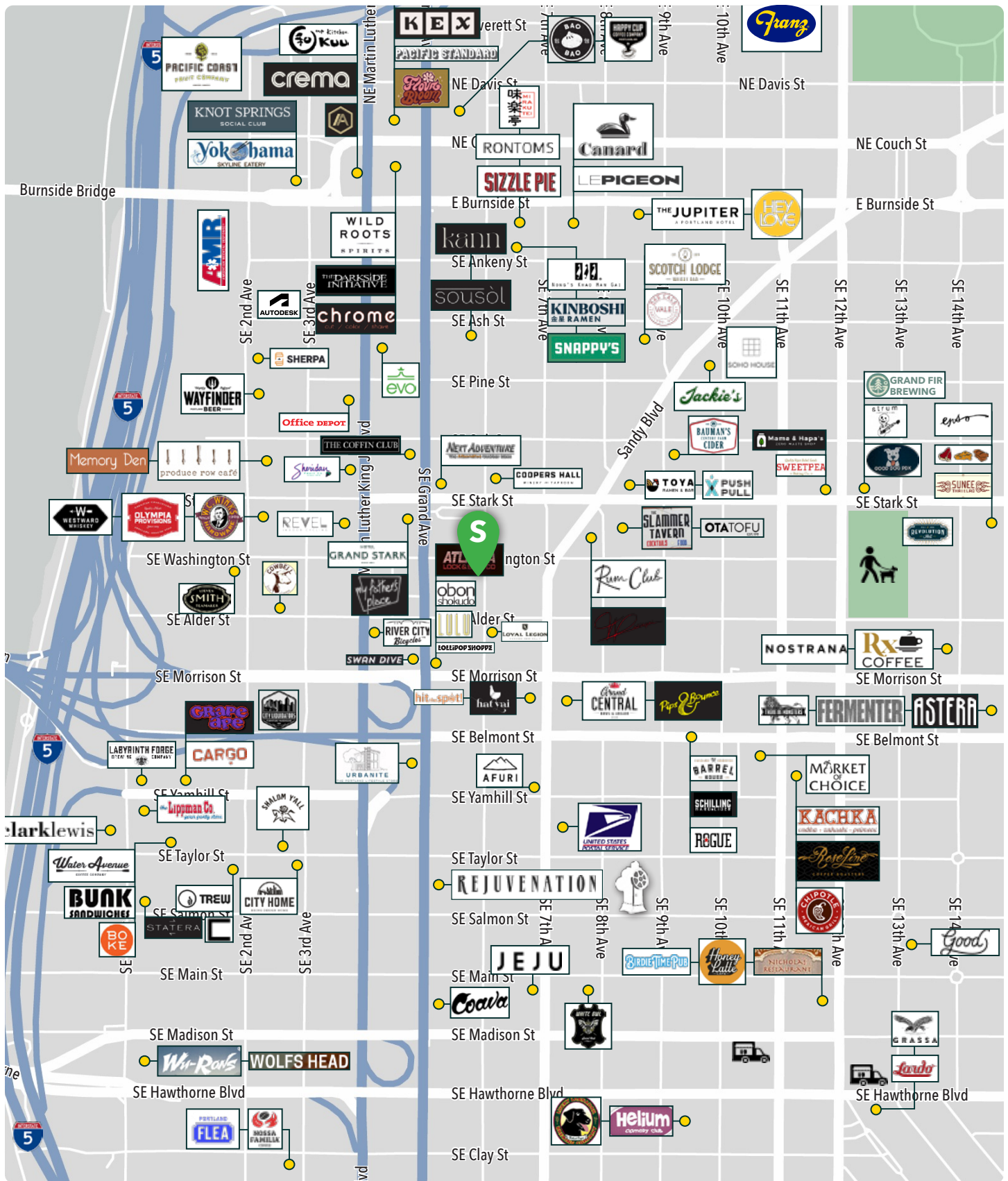


White Owl



Rejuvenation

RETAIL MAP



INFORMATION CONTAINED HEREIN IS FROM SOURCES DEEMED RELIABLE, BUT NOT GUARANTEED.