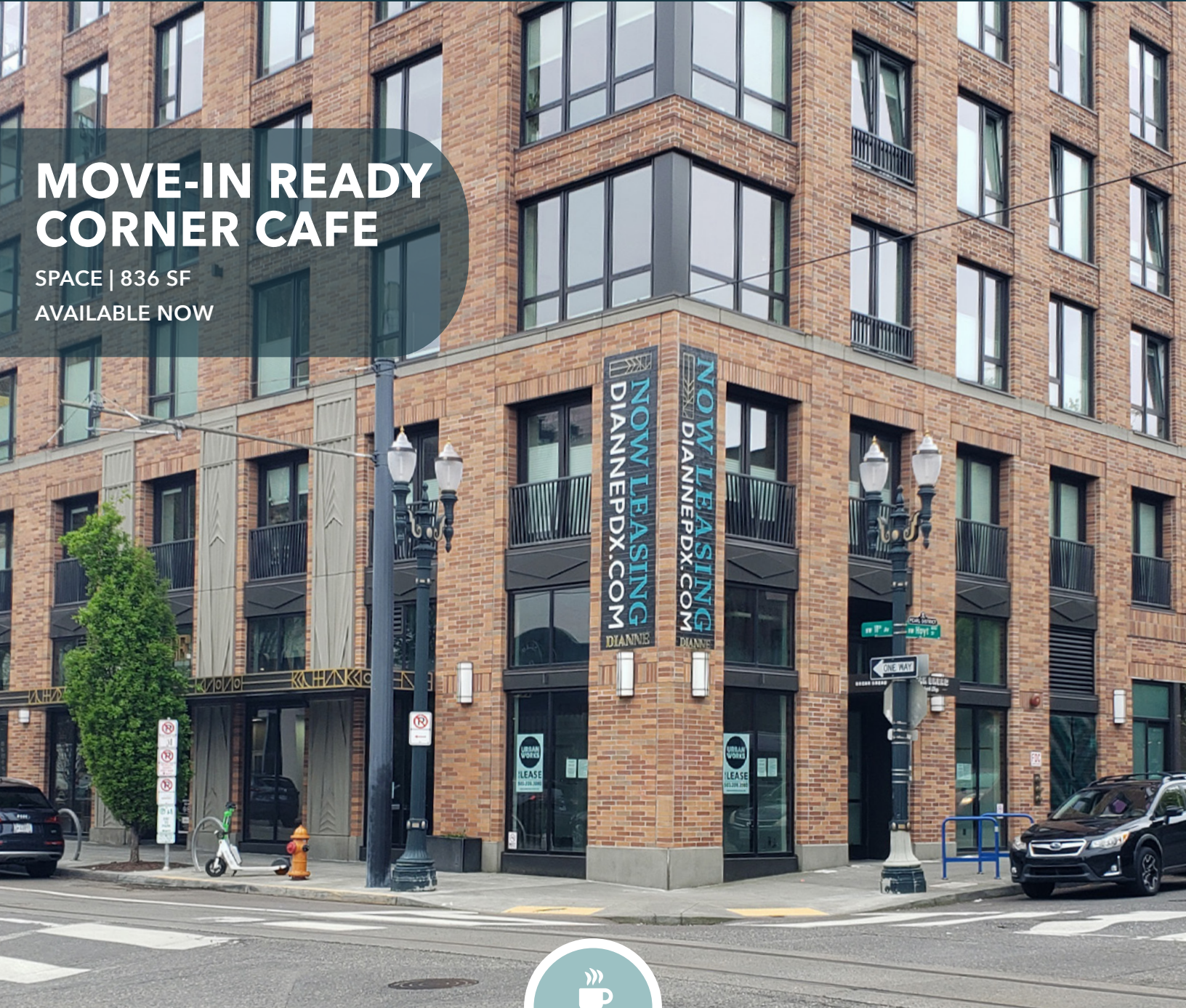


FOR LEASE

URBAN
WORKS

MOVE-IN READY CORNER CAFE

SPACE | 836 SF
AVAILABLE NOW



DIANNE

1106 NW HOYT ST

DAN BOZICH | 503.228.3135
dbozich@urbanworksrealestate.com

KIA HARTLEY | 503.228.3209
khartley@urbanworksrealestate.com

urbanworksrealestate.com

DIANNE



Address

1106 NW Hoyt St

Area

Pearl District

Space

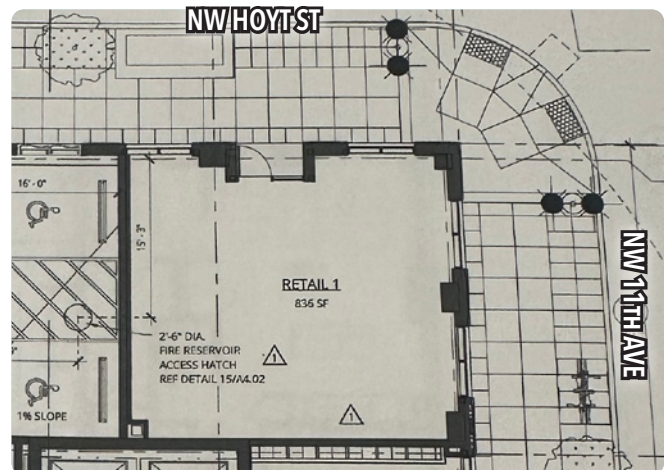
836 SF

Use

Cafe

Space Features

- Grease interceptor
- One ADA restroom
- Corner opportunity
- Two sides of glass



NEIGHBORHOOD



Demographics	¼ Mile	½ Mile	1 Mile
2023 Population	5,586	18,231	46,361
Total Employees	10,503	32,044	98,142
Total Businesses	959	3,111	8,894
Median Household Income	\$116,469	\$92,244	\$83,276
Median Age	40.3	38.4	38.9
Any College	92.6%	84.4%	84.9%



Abba Coffee



Brix



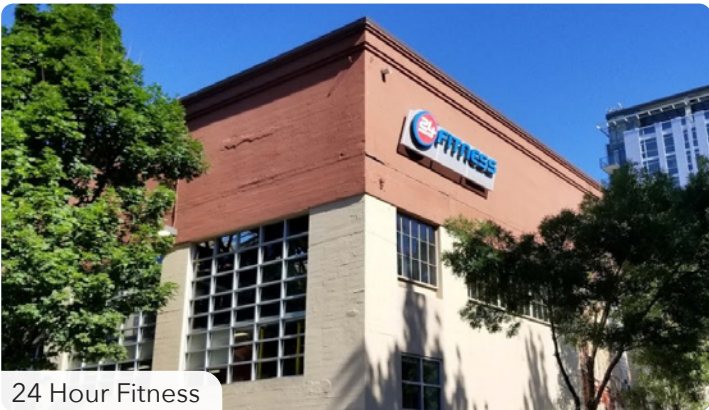
Andina



Janken



10 Barrel

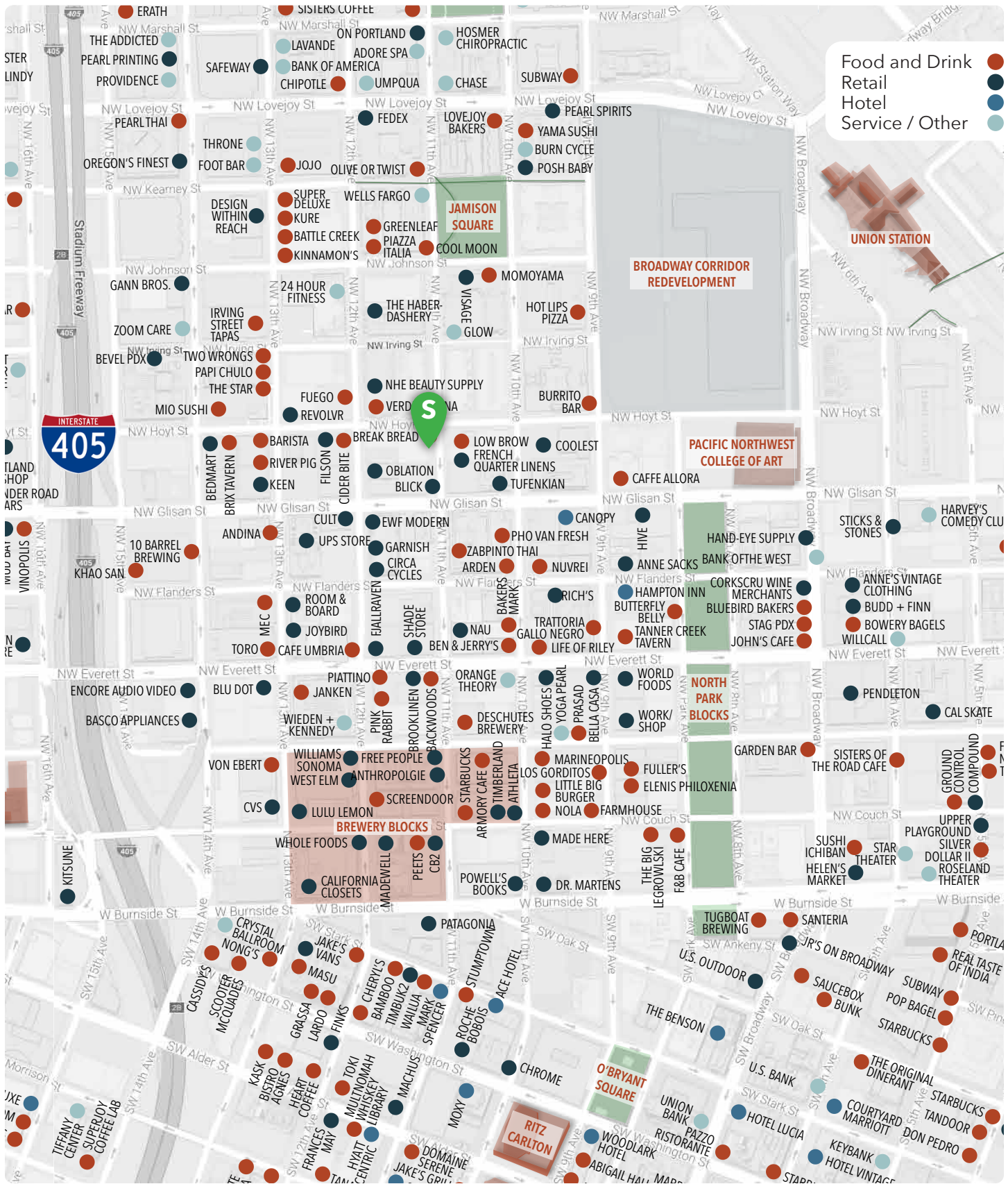


24 Hour Fitness



Ace Hardware

RETAIL MAP



INFORMATION CONTAINED HEREIN IS FROM SOURCES DEEMED RELIABLE, BUT NOT GUARANTEED.