

# FOR LEASE

URBAN  
WORKS

## AVAILABLE SPACES

RANGING FROM | 1,216 SF - 3,226 SF

NOW OPEN



 RAMEN OSWEGO



RESTAURANT



RETAIL



SERVICE



CAFE

## OSWEGO TOWNE SQUARE

### NEIGHBORHOOD CENTER IN LAKE OSWEGO

DAN BOZICH | 503.228.3135  
dbozich@urbanworksrealestate.com

KIA HARTLEY | 503.228.3209  
khartley@urbanworksrealestate.com

urbanworksrealestate.com

# OSWEGO TOWNE SQUARE

URBAN  
WORKS



## Tenant Mix

New Seasons has served as the center's anchor since 2006. Starbucks has an end cap location and has been in the center since 1998. The grocery and coffee anchors create a draw to the center which features a strong lineup of local, regional and national credit tenants. Other notable tenants include: Columbia Sportswear, Flying Pie Pizzeria, and KinderCare.

## Excellent Location

Oswego Towne Square is well maintained and features ample parking. Conveniently located in the affluent Mountain Park area. Customers are afforded easy access to the center from the intersection of Monroe Pkwy and Boones Ferry Road.

## Current Tenants Include:



MUDBAY



little big burger™



elements  
therapeutic massage



DAIRY ICE HILL



# SITE PLAN



Demographics	½ Mile	1 Mile	3 Miles
2025 Population	2,916	11,290	92,216
Total Employees	1,087	2,718	59,750
Total Businesses	206	571	8,289
Average Household Income	\$200,590	\$192,581	\$185,155
Median Age	46.7	45.8	42.9
Any College	91.1%	91.7%	89.5%



Aerial View of Center



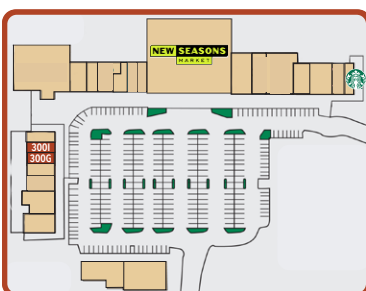
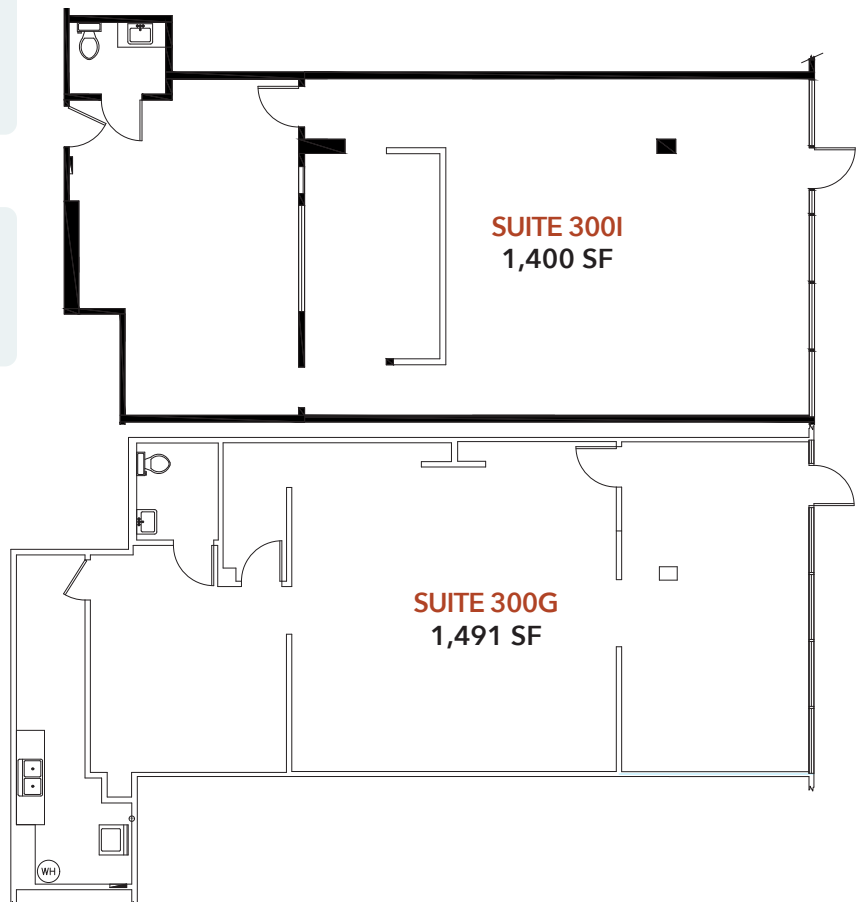
# SUITES 300I & 300G



**Suite 300I** | Second generation taproom with one ADA restroom.

**Suite 300G** | Second generation retail / service with one ADA restroom.

[VIEW VIRTUAL TOUR](#)



# SUITES 100S & 100Z

URBAN  
WORKS



Suite 100S Storefront



Suite 100Z Storefront

**Suite 100S** | Second generation restaurant.

[VIEW VIRTUAL TOUR](#)

**Suite 100Z** | Office / service space with two ADA restrooms. The space is visible from Boones Ferry Road and conveniently located close to the center's entrance.

[VIEW VIRTUAL TOUR](#)

