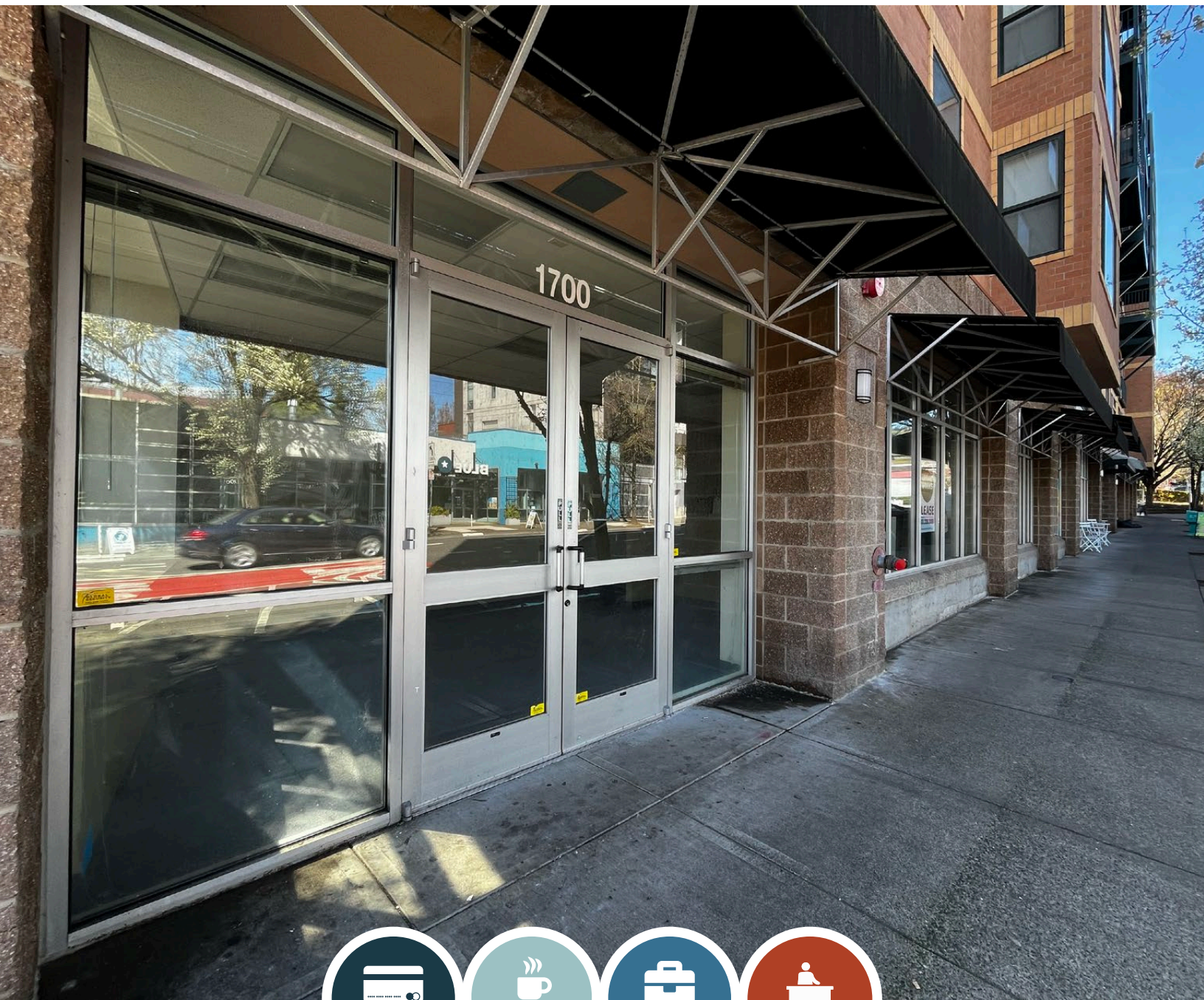


FOR LEASE

URBAN
WORKS



COLLINS CIRCLE

1700 & 1728 SW JEFFERSON ST

CHARLOTTE LARSON | 503.228.3165 | clarson@urbanworksrealestate.com
urbanworksrealestate.com

COLLINS CIRCLE



1700 SW Jefferson

Use

Space | 1,128 SF

Office / Service

Highlights

Corner space with office build-out including two private offices, kitchenette and reception area.



1728 SW Jefferson

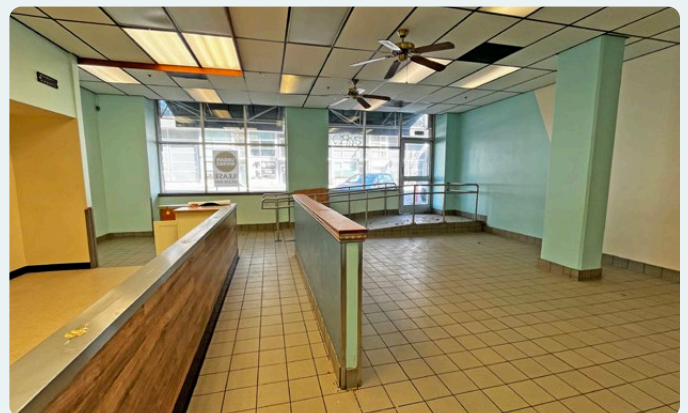
Use

Space | 1,493 SF

Retail / Cafe

Highlights

Counter area and back room with cafe plumbing.



NEIGHBORHOOD



Demographics	¼ Mile	½ Mile	1 Mile
2024 Population	4,103	19,524	52,558
Total Employees	4,563	28,255	101,005
Total Businesses	375	2,854	8,926
Median HH Income	\$47,922	\$66,975	\$78,959
Median Age	34	36.8	37.7
Any College	83.6%	83.1%	82.6%



Goose Hollow | Portland's historic Goose Hollow neighborhood is home to Providence Park (25,000 seat stadium and home of the Portland Timbers & Thorns), Lincoln High School and Multnomah Athletic Club (over 20,000 members). The neighborhood is walking distance to the Pearl District, West End and Portland State University. Located on the Blue and Red MAX line, Goose Hollow is the gateway to Washington Park, with its International Rose and Japanese Gardens and the Oregon Zoo.

