

# FOR LEASE

URBAN  
WORKS

## VANCOUVER WATERFRONT RETAIL

AVAILABLE SPACES | 1,501 SF - 5,830 SF



RESTAURANT



GROCERY



RETAIL



FITNESS

THE WATERFRONT VANCOUVER  
PARKING CENTER

700 W COLUMBIA WAY | VANCOUVER, WA

URBAN  
WORKS

DAN BOZICH | 503.228.3135  
dbozich@urbanworksrealestate.com  
urbanworksrealestate.com

KIA HARTLEY | 503.228.3209  
khartley@urbanworksrealestate.com  
urbanworksrealestate.com

IN PARTNERSHIP WITH  
 **APEX**  
REAL ESTATE PARTNERS

SUJATA PATEL | 503.595.2828  
sujata@apexcre.com  
apexcre.com





# THE WATERFRONT VANCOUVER PARKING CENTER

700 W COLUMBIA WAY | VANCOUVER, WA

## SUMMARY

- Retail spaces are located beneath The Waterfront Vancouver Parking Center featuring 829 parking spaces within the only off-street public garage in the district
- Multiple sizes available, suites can be combined up to 5,830 SF

## NEW TENANTS - Q1 2026

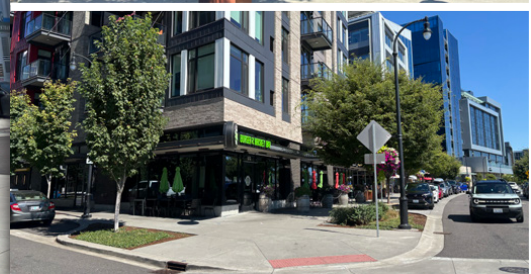
CANTONG CAFE WHITE BIRCH  
DESIGN COMPANY



## NEIGHBORING RETAILERS INCLUDE:



GRASSA

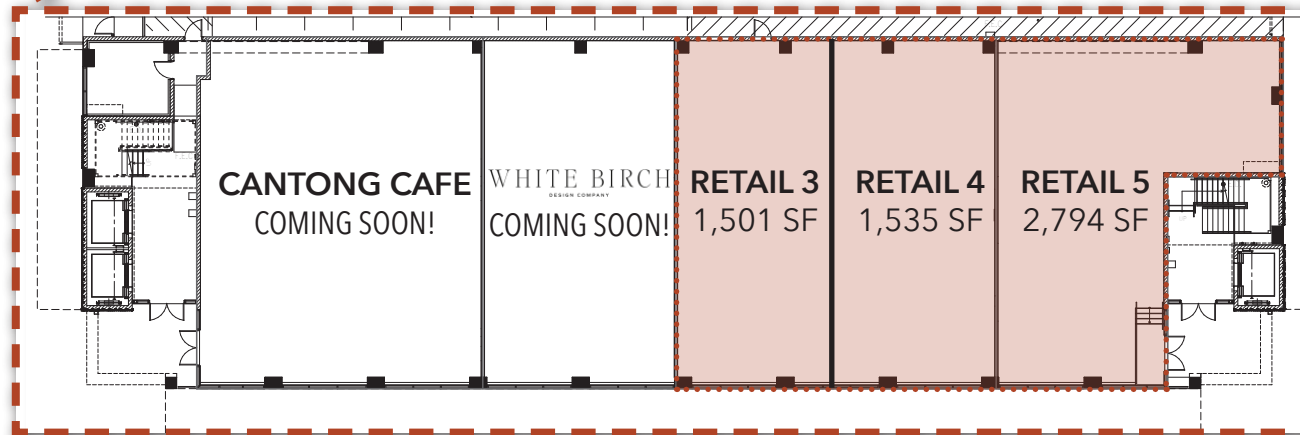
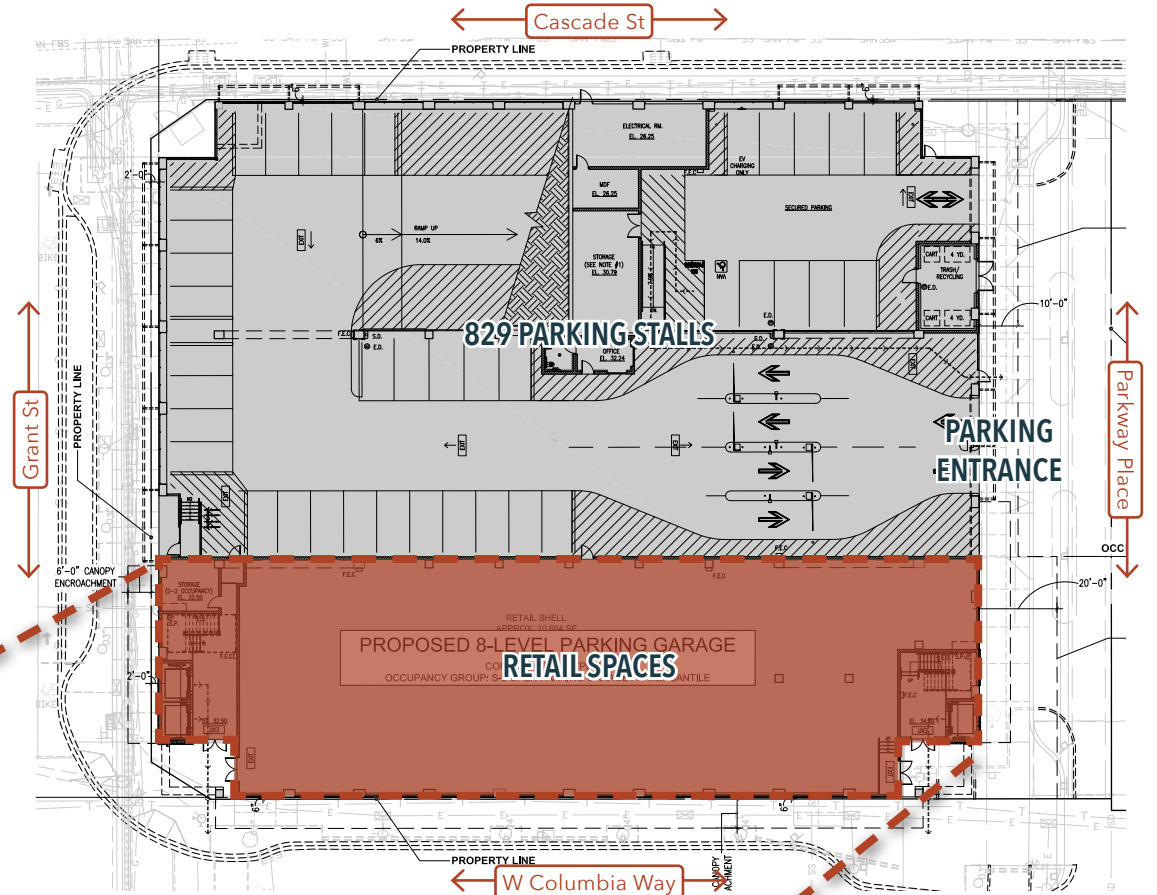






# SITE PLAN

AVAILABLE SPACES







# VANCOUVER WATERFRONT

MARKET AREA

**MARKET OVERVIEW** | The Vancouver Waterfront is the largest residential and commercial development underway in the tri-county region & provides the area with a true world-class designation for shopping, dining and entertainment. The Waterfront is benefitting from over \$2.6 billion in direct investment, delivering 2,200 residential units, 600,000 SF of Class A office space, 150,000 SF of retail and 288 luxury hotel rooms. When complete, The Waterfront will encompass 20 city blocks, over 2.8 million square feet of land, including a half-mile waterfront park that overlooks the Columbia River.

