

FOR LEASE

URBAN
WORKS

BUCKMAN NEIGHBORHOOD
FLEX / CREATIVE SPACE
AVAILABLE NOW | 5,244 SF



FLEX



CREATIVE

726

726 SE 20TH AVE

FLEX / CREATIVE SPACE WITH OFF-STREET PARKING

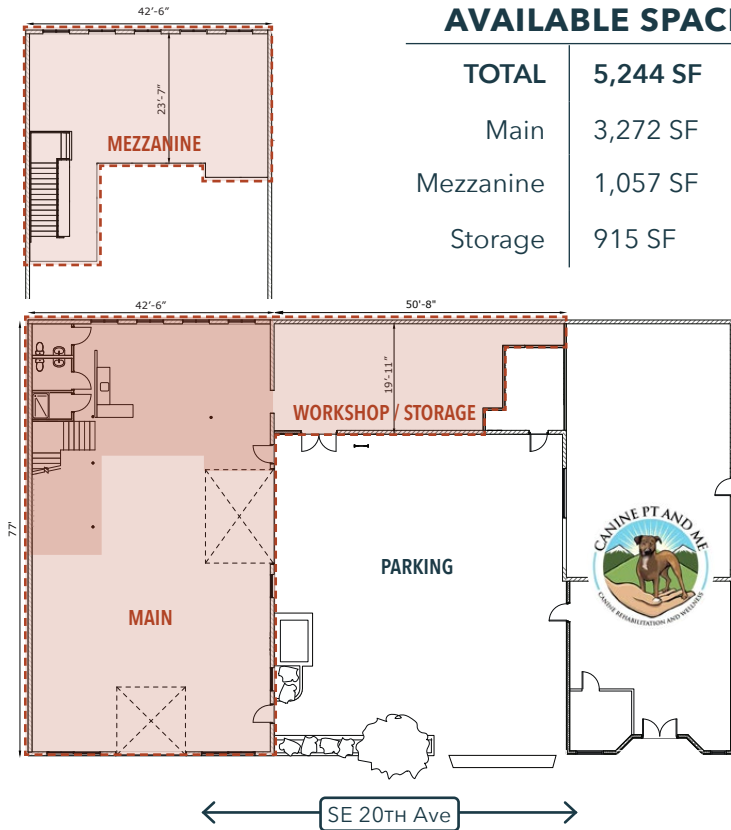
CHARLOTTE LARSON | 503.228.3165 | clarson@urbanworksrealestate.com
urbanworksrealestate.com

URBAN WORKS **SUMMARY**
726 SE 20TH AVE

ABOUT THE SPACE

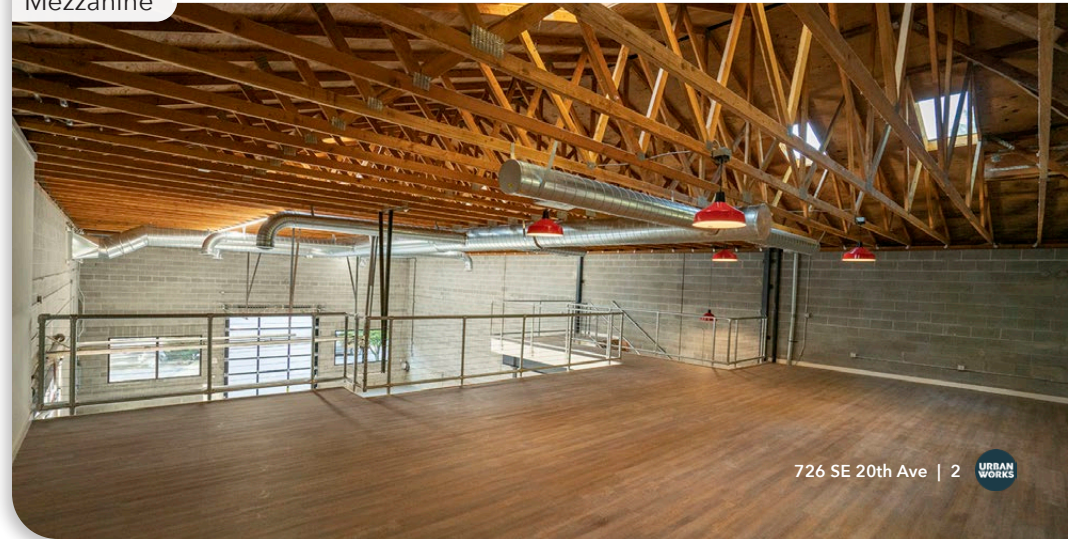
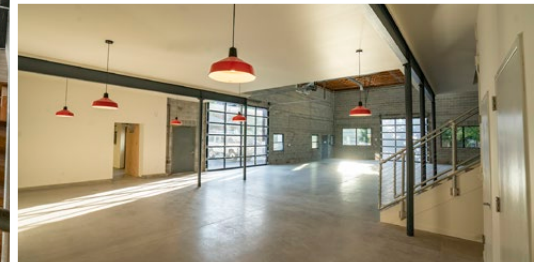
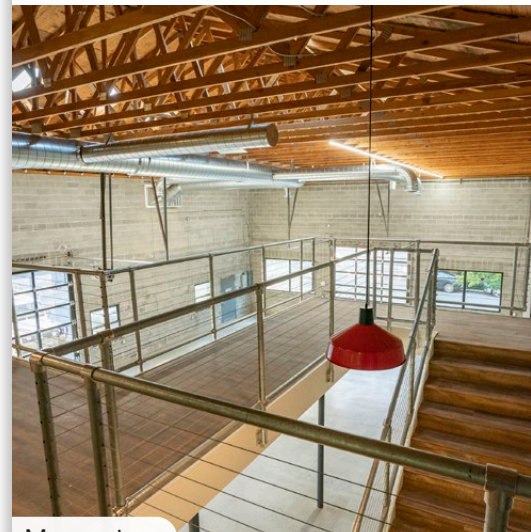
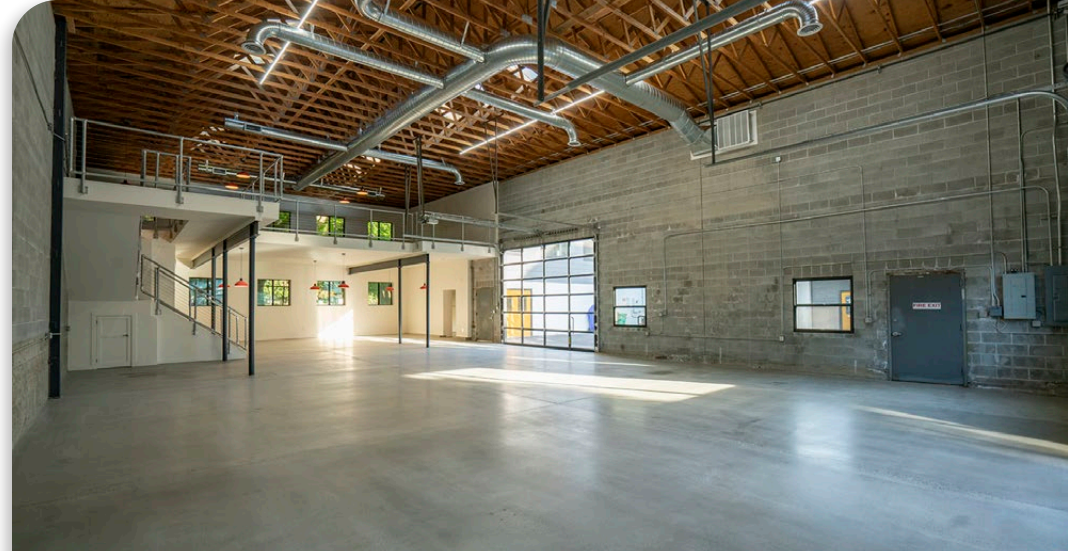
Beautiful open warehouse / flex space with newer modern remodel and low NNN's. Space features include:

- Roll-up doors
- Mezzanine level
- Abundant natural light
- Polished concrete floors
- Built-out kitchenette area
- Parking included
- Ground floor workshop / storage room
- Two HVAC systems
- Two restrooms
- 400 amp electrical panel
- Close to restaurants, bars and cafes
- 150' to a bus stop.



AVAILABLE SPACE

TOTAL	5,244 SF
Main	3,272 SF
Mezzanine	1,057 SF
Storage	915 SF

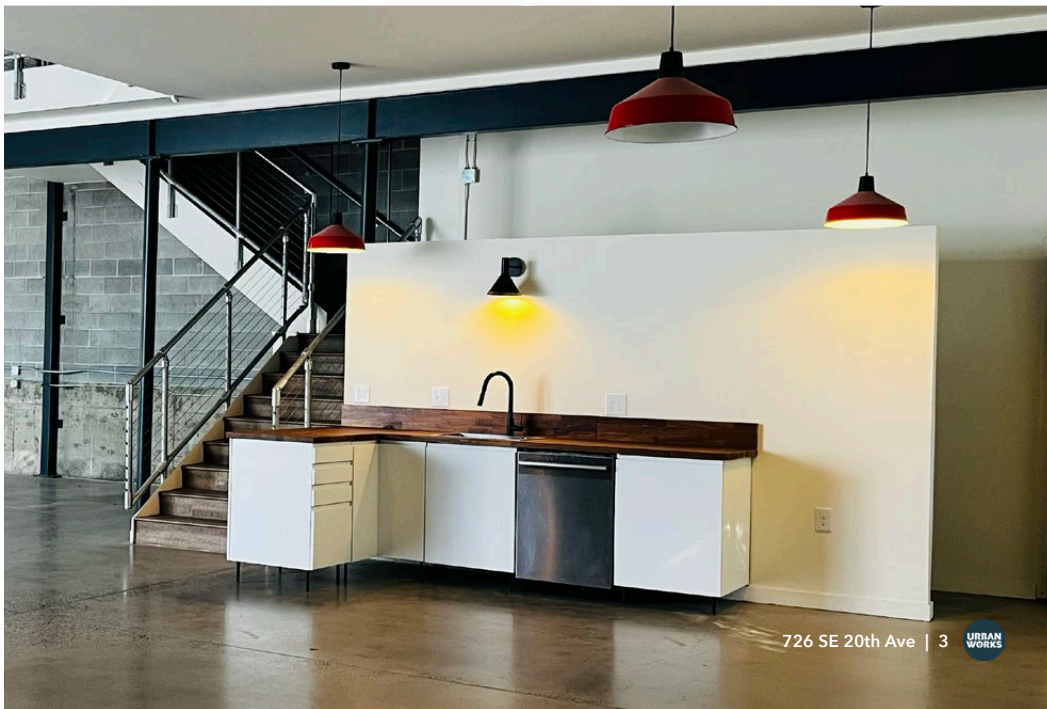
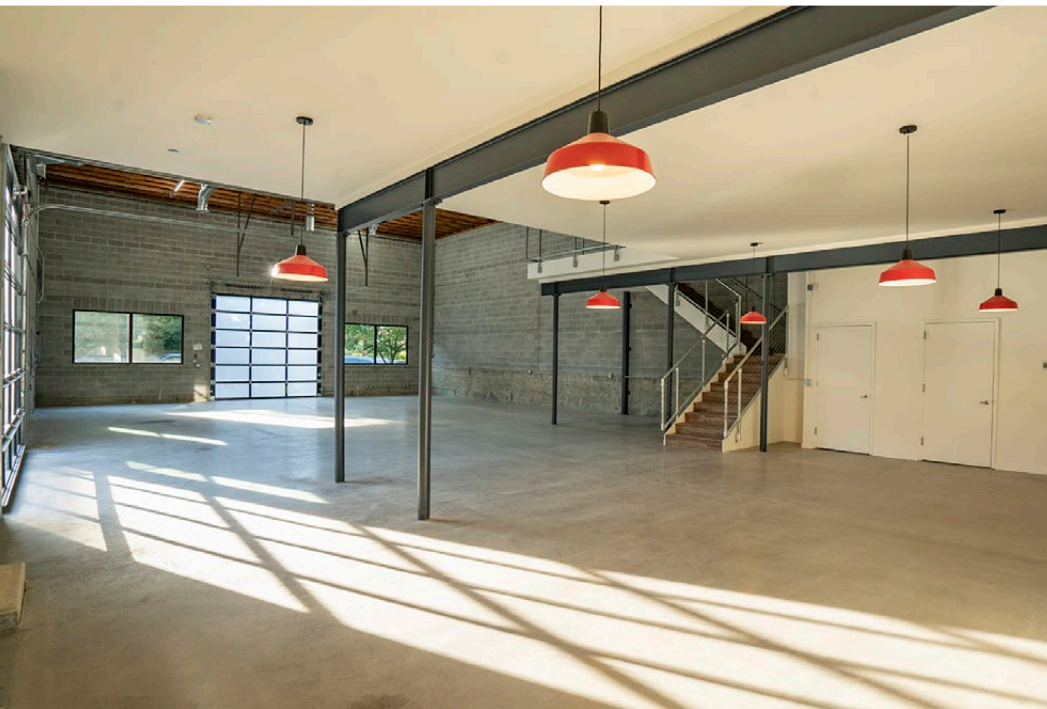
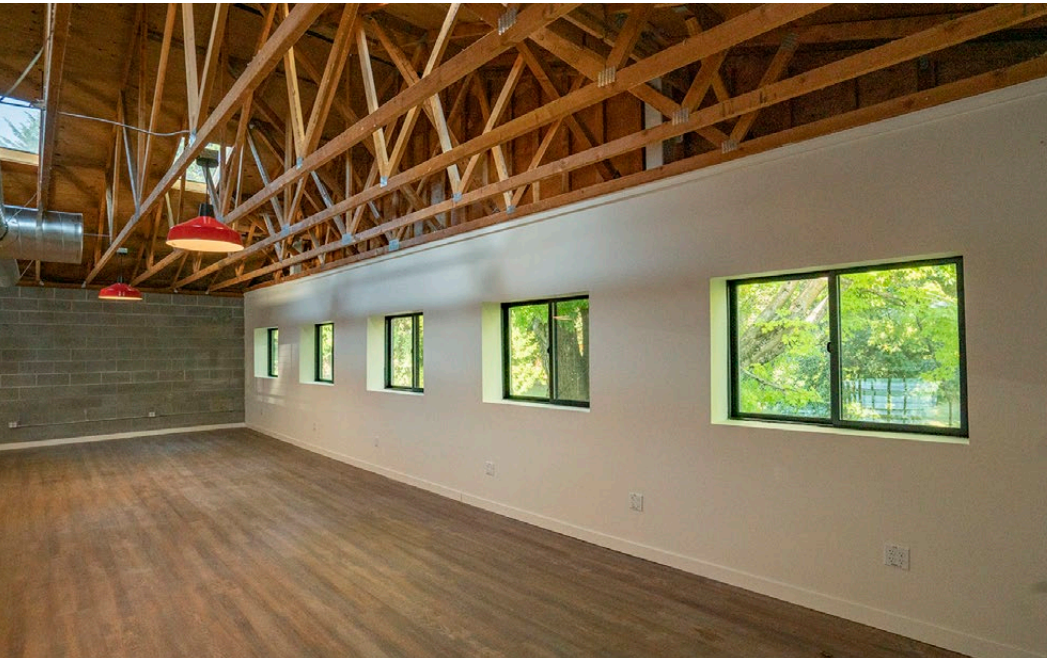


The information contained herein is believed to be reliable, but is not warranted as to its accuracy and may change or be updated without notice.



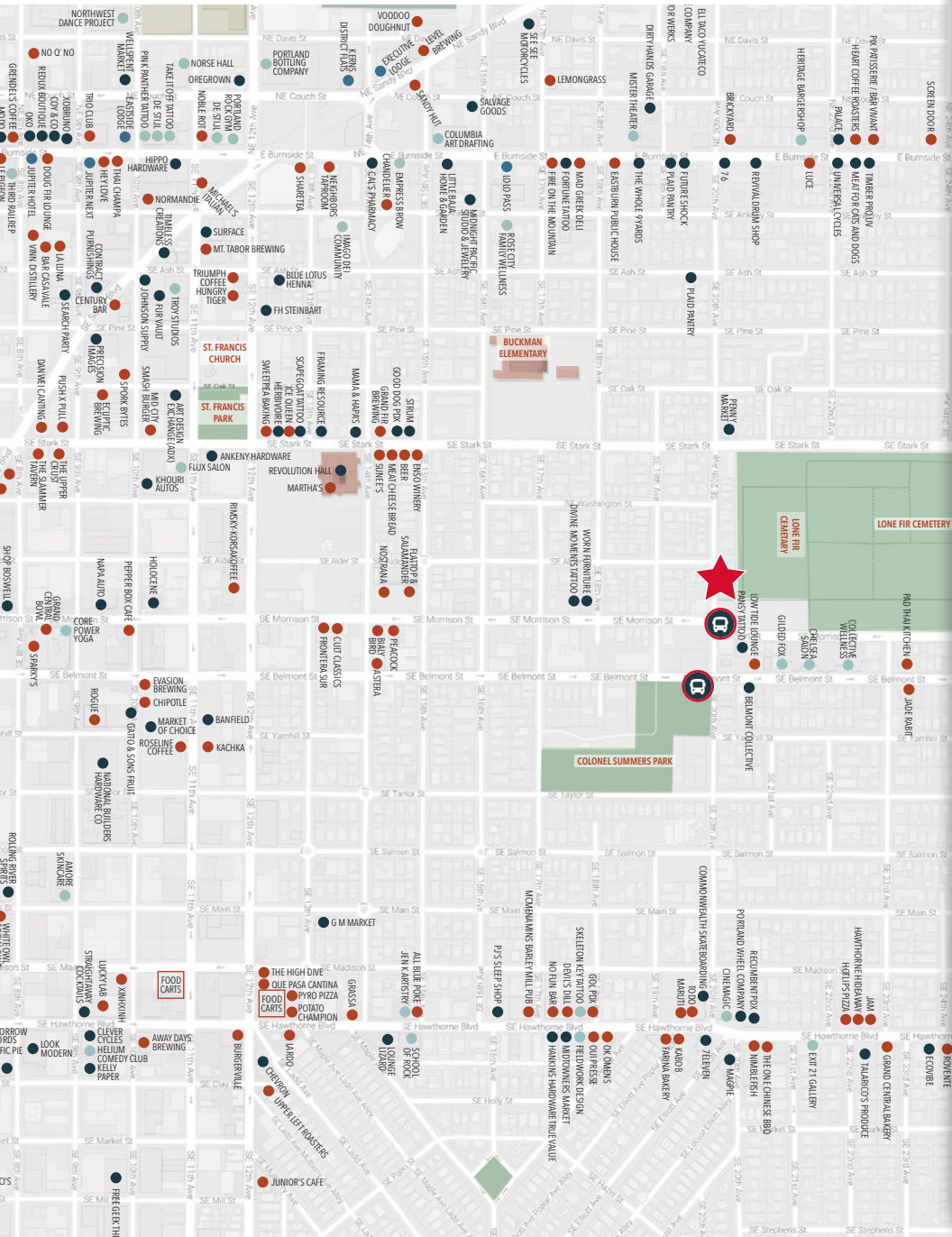
ADDITIONAL PHOTOS

726 SE 20TH AVE



URBAN WORKS **TRADE AREA**
BUCKMAN

- Food and Drink ●
- Retail ●
- Hotel ●
- Service / Other ●



Nostrana

The Mont

Revolution Hall

Enso Winery