

# FOR LEASE

URBAN  
WORKS

**CLOSE-IN  
SE PORTLAND  
OPPORTUNITY**

SIZE | 640 SF

AVAILABLE MAY 1, 2026



RETAIL



SERVICE



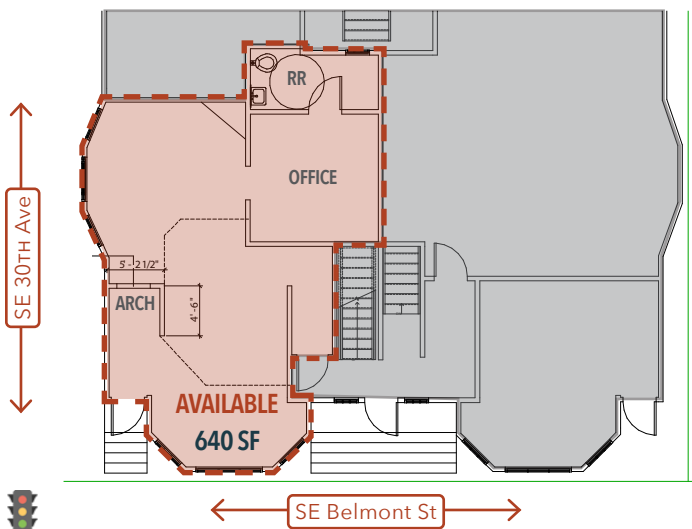
CREATIVE

**— CHARMING RETAIL / CREATIVE SPACE —**

**3001 SE BELMONT ST**

CHARLOTTE LARSON | 503.228.3165 | [clarson@urbanworksrealestate.com](mailto:clarson@urbanworksrealestate.com)  
[urbanworksrealestate.com](http://urbanworksrealestate.com)

# 3001 SE BELMONT ST



## Address

3001 SE Belmont St

## Area

Sunnyside / Close-in SE

## Space

640 SF

## Timing

May 1, 2026

## Uses

Retail / Service / Creative

## About the Space

Perfect small retail, service or office space at 3001 SE Belmont St. This 640 SF space features one ADA bathroom, kitchen area and private office space. Charming building details abound. Available May 1, 2026.