

FOR LEASE

URBAN
WORKS

RETAIL / CREATIVE SPACE IN STUNNING MIXED-USE BUILDING

SPACE | 1,200 SF

AVAILABLE NOW



4224 N MISSISSIPPI AVE

CHARLOTTE LARSON | 503.228.3165 | clarson@urbanworksrealestate.com
urbanworksrealestate.com

4224 N MISSISSIPPI AVE



Address

4224 N Mississippi Ave

Area

N Mississippi

Space

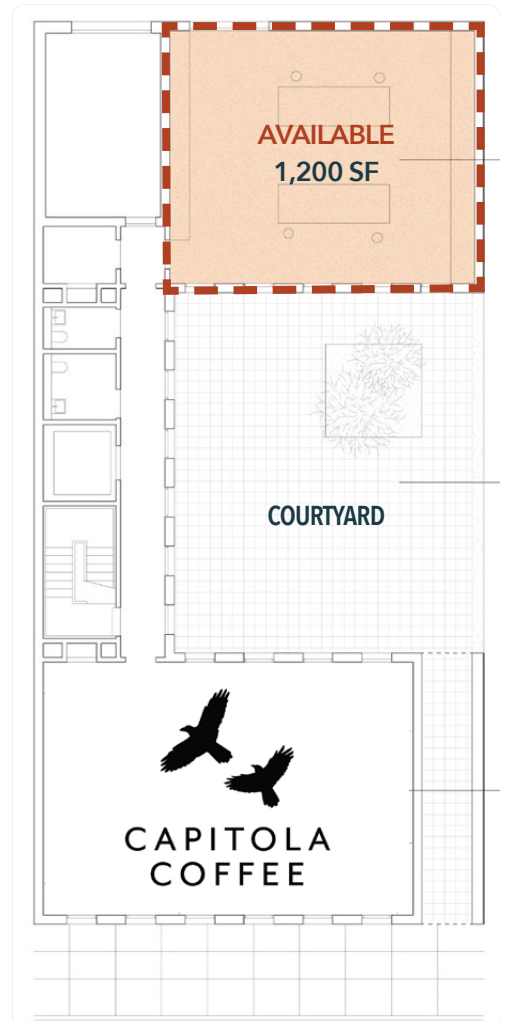
1,200 SF

Uses

Retail / Service / Creative

About the Space

Perfect gem of a space at 4224 N Mississippi Ave. This stunning building, designed by Waechter Architecture, features environmentally sustainable construction with mass timber construction, hydronic radiant HVAC, weathering steel cladding and no sheetrock, paint, toxic finishwork etc and a beautifully landscaped courtyard area. Perfect for retail services, office, maker space, etc. Available now.



N MISSISSIPPI AVE



Demographics	¼ Mile	½ Mile	1 Mile
2025 Population	2,301	9,797	27,528
Total Employees	864	3,207	15,799
Total Businesses	151	535	1,880
Median Household Income	\$103,404	\$108,219	\$105,879
Median Age	34.2	34.3	35.6
Any College	84.4%	82.3%	83.6%

